



Campagnolo
 PURE PERFORMANCE

2015

Campagnolo
 2015





WHEELS

WHEEL TECHNOLOGIES	74
CARBON WHEELS	82
ALU/CARBON WHEELS	90
ALUMINIUM WHEELS	96

CAMPAGNOLO® WHEEL TECHNOLOGIES

Campagnolo® is dedicated to raising the standards of what a performance wheel should be and to do so, invests a great deal in research and development. The engineers of the Campy Tech Lab™ are not only tasked with producing wheels that meet or exceed our elevated performance standards, but also with producing a high quality product that is reliable and durable as well. From the entry level Khamsin™ to the professional level Bora™ both performance standards and reliability are guaranteed.

Each and every wheel that bears the Campagnolo® name is manually assembled and goes through several manual and digital inspection processes. Every spoke, nipple, rim and quick release are inspected at each step in the production process just as spoke tension and wheel alignment are verified before any wheel can leave the factory.

We are very proud of our wheels and the public has come to expect nothing less than the best from Campagnolo® which makes such a thorough inspection process absolutely necessary. A process that requires nearly 1 hour and 40 minutes but guarantees Campagnolo® quality and performance for the life of each and every wheel we produce.

CAMPAGNOLO® WHEEL IDENTIFICATION CARD

Since its birth over 80 years ago Campagnolo® has been dedicated to continuous innovation in order to produce the best, most competitive and reliable products possible. To continually push the limits in this way is the work of the engineers of the Campy Tech Lab™.

Even the smallest details and material choices are painstakingly scrutinized in an effort to produce what is often to become the newest performance standard. As a result, our testing department is one of the most important areas of the entire operation and each and every product must go through strenuous and extreme testing before it earns the right to bear the Campagnolo® name. We test at levels above and beyond anything required and as a result produce products that are a step ahead.

- **Fatigue test:** before the manufacturing stage, each wheel and each of its components are subjected to long and very challenging tests that ensure the durability and performance over time.
- **Crash test:** simulates the impact of the wheel in differing situations. Campagnolo® crash tests have successfully passed all requirements stipulated by the UCI.
- **Tyre burst test:** all Campagnolo® wheels are tested at inflation pressures well above those indicated on the tyre.
- **Environment test:** exposure to UVA and UVB rays, salt attack and exposure to moisture: these are the tests that all Campagnolo® wheels must pass to ensure maximum performance and reliability over time.



100% Manually assembled and Electronically checked

The extensive attention to detail and testing mentioned above may be sufficient for some companies to ensure the quality of their product but not for Campagnolo®. To ensure the quality of each and every wheel the standards applied to the production process must be then verified on each and every final product at the end of fabrication. Campagnolo® made a clear and bold decision: to assemble each wheel manually and submit it to a series of final inspections that guarantee their quality.

Only through in-depth inspection, both manual and digital, of each and every piece of every final product that leaves the premises can we be 100% sure of the exact same quality for each and every wheel that bears the Campagnolo® name.

- **Balancing:** guarantees the absence of vibrations at fast speed.
- **Lateral and radial control:** guarantees the perfect alignment of the wheel to ensure precise rolling of the wheel.
- **Camber:** ensures the perfect symmetry of the wheels with the bicycle.
- **Spokes tension:** ensures optimal balance at every point of the wheel.
- **Rolling torque of the hub:** ensures a perfect adjustment of the hubs.

CERTILOGO®

CAMPAGNOLO® and CERTILOGO® AGAINST COUNTERFEITING: a tangible answer that protects our clients' safety and purchases.

Top-end Campagnolo® wheels are considered by the market and by aficionados to be reference products and as such are highly desirable. They have therefore also become appetizing to counterfeiters who have cloned some of our models (especially those in carbon fiber) releasing considerable numbers onto the international markets.

The wheel is a performance product, but also a safety component. This aspect means that those who purchase a fake product, while saving money on something that clearly costs much less than the going market price, puts their personal safety at great risk. The materials and production processes that together help to achieve a safe performing product are obviously not the same.

With the aim of fighting and combating these counterfeiters, Campagnolo® is the first in the cycling sector to have put in place, thanks to the support of Certilogo®, a control system that enables our clients to authenticate the product simply and immediately.

Starting with the products in the 2015 catalogue, each pair of Campagnolo® wheels in the Bora™ and Hyperon™ lines (see details) will come with an individual ID code (the Certilogo® Code or CLG Code) on a swing tag attached to a spoke on the wheel.

The tag will comprise a Certilogo® Code (in both numerical and QR code) that allows anyone, before or after purchase to check that the product is authentic. To authenticate Campagnolo® wheels, just visit www.certilogo.com, insert the CLG Code given on the tag or download the Certilogo APP free from Apple Store.

The tag will also have a Security Code covered by a silver stripe (technology similar to that used on mobile top-up cards). In certain circumstances, the end user (and only the end user) may be required to enter this code by Certilogo®. This countercheck may be useful, for example, in the case of online sales (when the client has no guarantee that the product viewed is the same one supplied).

We suggest you keep the Campagnolo® Original Wheels tag even after product authentication for possible future use and, if necessary, to confirm ownership of the product.

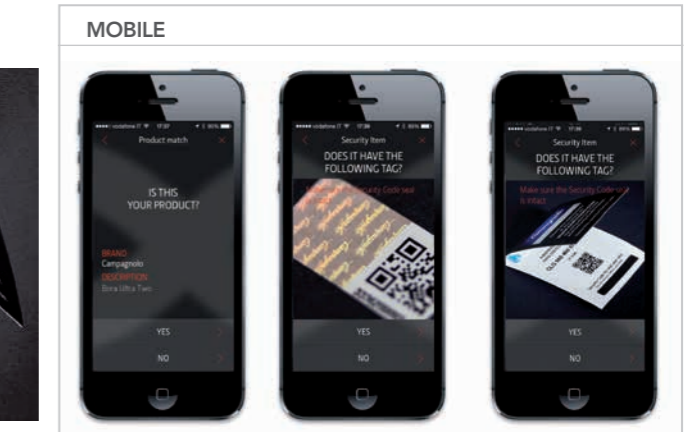
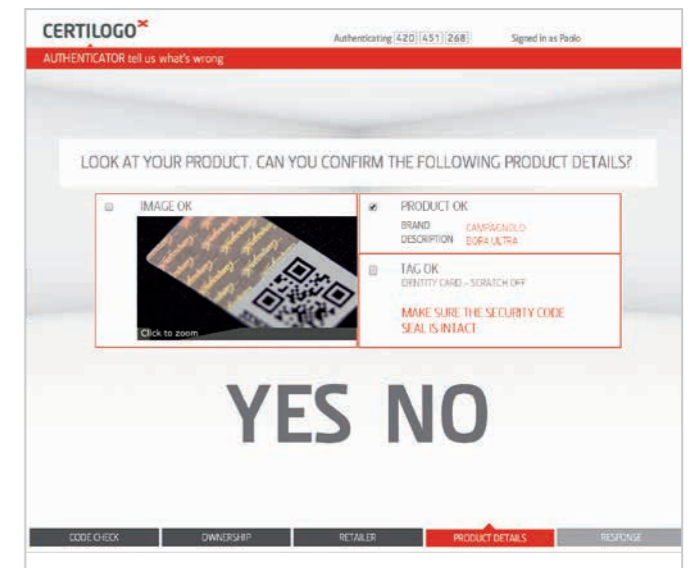
Warning:

Wheels without a tag bearing a CLG Code should be considered NOT ORIGINAL. Used wheels bought without their original tag bearing a CLG Code should be considered of uncertain origin.

PRODUCTS COVERED BY THE AUTHENTICATION SERVICE

The Campagnolo® Original Wheels tag will be present on a spoke of the following wheels in the 2015 range: Bora™ Ultra 35, Bora™ One 35, Bora™ Ultra 50, Bora™ One 50, Bora™ Ultra 80, Hyperon™ Ultra (released from the Campagnolo warehouse from 1st October 2014)

Should you not find a Campagnolo® Original Wheels tag on the above listed wheels, immediately notify your nearest Pro-Shop™ or Campy Code™ store or Campagnolo® Srl directly (addresses at www.campagnolo.com)



S.H.A.R.C

Because finding the perfect wheel means having the correct information.

Campagnolo®, in collaboration with professional racers as well as amateur enthusiasts, has identified and developed the five most significant indicators that will allow you to choose the best wheel for your riding style and your needs.

What does S.H.A.R.C. stand for?

SMOOTHNESS: This indicator helps you understand the degree of smoothness of one wheel with respect to another thanks, for example, to the use of high performance the CULT™ ceramic ball bearings, or the USB™ ceramic ball bearings, or thanks to other technologies applied to the wheel such as 2-Way Fit™.

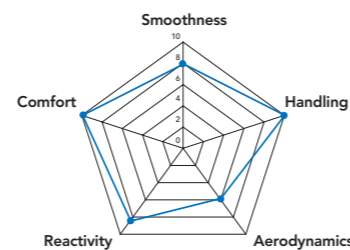
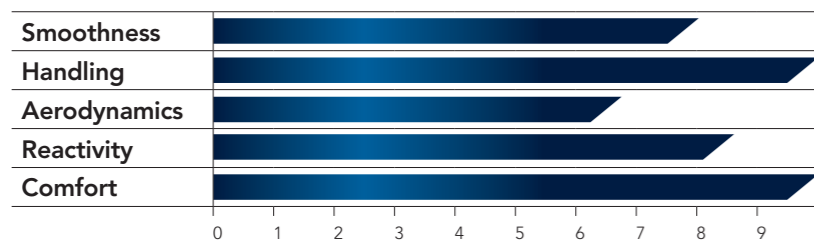
HANDLING: No race course in cycling is a straight line and dealing with curves or changing directions quickly can often times make a difference in race results. Many factors determine how well a wheel handles and to evaluate this indicator we take into consideration the geometry of the spokes, lacing patterns, hub design, cross section of the rim, materials employed and even the type of tire to be used.

AERODYNAMICS: Indicates the performance features of the wheel in terms of its propensity to penetrate the air. This factor depends on the height and profile of the rim, the section and form of the spokes, and the degrees of camber of the wheel.

REACTIVITY: How "ready" and quick is the wheel in response to your change of pace on the pedals? The reactivity index of the wheel refers precisely to this concept. Reactivity depends on the weight of the rim and of the wheel in its entirety, on the torsional stiffness (i.e. how much the wheel deforms around the hub at the moment in which the cyclist pushes on the pedals), the flexional stiffness (i.e. the extent to which the wheel maintains its shape along its axis when it is shifted, due to the push on the pedal, from the vertical axis), and on inertia.

COMFORT: Do you prefer a wheel that can absorb the ruggedness of the terrain or an absolutely rigid wheel with no compromise? It depends on your driving style and your particular needs. The comfort index aims to help you to understand the behaviour of the wheel in the case of roads that are not perfectly smooth, and in any case to help you understand the extent to which the wheel transmits the vibrations of your bike.

Campagnolo® provides you with all the technical information, but now it's up to you to decide which is the perfect wheel for your needs! Your passion, your riding style and your sensations will aid you in making your decision.



	Smoothness	Handling	Aerodynamics	Reactivity	Comfort
--	------------	----------	--------------	------------	---------

CARBON WHEELS

BORA™ ULTRA™ TT	10	6	10	7,5	5
BORA™ ULTRA™ 80	10	7	10	9	8
BORA™ ULTRA™ 50	10	9,5	9,5	10	9
BORA™ ULTRA™ 35	10	9,5	9,5	9	9
BORA™ ONE 50	9	9,5	9,5	9,5	9
BORA™ ONE 35	9	9,5	9,5	9	9
HYPERON™ ULTRA™ TWO	10	10	6	10	9

ALUMINIUM/CARBON WHEELS

BULLET™ ULTRA™	10	8	9	7,5	8
BULLET™ ULTRA™ 80mm	10	7	9,5	6,5	8
BULLET™	8,5	8	9	7,5	8
BULLET™ 80mm	8,5	7	9,5	6,5	8

ALUMINIUM WHEELS

SHAMAL™ MILLE™	9	9	8,5	9	8
SHAMAL™ ULTRA™	9	9	8,5	9	8
EURUS™	8	9	8,5	8,5	8
ZONDA™	8	9	8,5	8	8,5
SCIROCCO™ 35mm	7,5	9	8,5	8	8
VENTO™ ASYMMETRIC™	7,5	8	7,5	7	9
KHAMSIN™ ASYMMETRIC™	7,5	7,5	7,5	6,5	8,5
NEUTRON™ ULTRA™	8	10	6	8,5	10

CX WHEELS

SCIROCCO™ 35mm CX	7,5	9	8,5	8	8
KHAMSIN™ ASYMMETRIC™ CX	7,5	7,5	7,5	6,5	8,5

QUICK RELEASE CAMPAGNOLO®

What is the Campagnolo® Quick Release?

The Campagnolo® Quick Release is more than just a wheel retention system that acts as an axle. It is highly symbolic as it is the single piece from which the long and glorious history of Campagnolo® was born. The company's objective of continuously innovating to improve the cycling experience started with the quick release and it remains a functional and necessary symbol to this creed even now. Maximum performance in terms of assembly/disassembly ease, weight and smoothness of the wheel without compromising safety in any way.

The patented Campagnolo® mechanism is the one that best meets these needs. The lever is positioned centrally with respect to the axis of the hub axle, i.e. in the best position to put both ends of the axle in traction without differences in load between the sides. The axle is in the form of a cam and applies the closure traction on the axis of the quick release.

Starting a few years ago, for the Bullet™ Ultra™ family and full-carbon wheels Campagnolo® incorporates a more aerodynamic version of the quick release. The mechanics and the design are those of the well-tested Campagnolo® patent, and the lever has been designed for the maximum aerodynamic penetration.

Advantages

Thanks to the cam axle closure, it is simple and intuitive to understand the force to be applied for correctly closing the quick release and, even more importantly, the cam creates a mechanical impediment to the opening of the release, making it extremely safe during road use.

The fork positioned symmetrically with respect to the sides of the lever and centrally with respect to the axis of the skewer, enables an even distribution of the loads and forces at each point of the skewer, thus avoiding critical breakage points and at the same perfect closure the fork of the frame and the wheel. The symmetry of the lever and the special shape of the cam make locking and releasing the wheel extremely easy, fluid, and safe. The new aerodynamic form, moreover, considerably improves the aerodynamic coefficient of the range of wheels dedicated to time trial disciplines.

CARBON WHEELS					
BORA™ ULTRA™ TT					•
BORA™ ULTRA™ 80					•
BORA™ ULTRA™ 50					•
BORA™ ULTRA™ 35					•
BORA™ ONE™ 50					•
BORA™ ONE™ 35					•
HYPERON™ ULTRA™ TWO					•
ALUMINIUM/CARBON WHEELS					
BULLET™ ULTRA™					•
BULLET™ ULTRA™ 80mm					•
BULLET™					•
BULLET™ 80mm					•
ALUMINIUM WHEELS					
SHAMAL™ MILLE™					•
SHAMAL™ ULTRA™					•
EURUS™					•
ZONDA™					•
SCIROCCO™ 35mm					•
VENTO™ ASYMMETRIC™	•				
KHAMSIN™ ASYMMETRIC™	•				
NEUTRON™ ULTRA™					•
CX WHEELS					
SCIROCCO™ 35mm CX					•
KHAMSIN™ ASYMMETRIC™ CX	•				

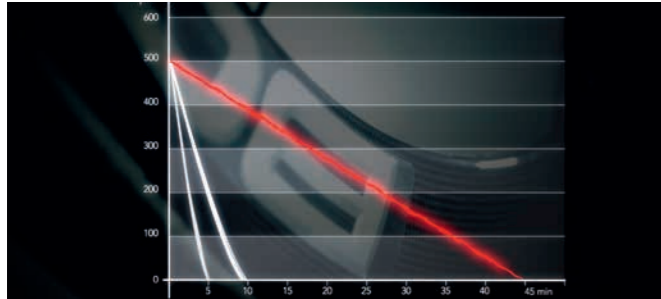
CULT™: Ceramic Ultimate Level Technology

A truly efficient wheel is not only aerodynamically efficient but also must roll as smoothly as possible. CULT™ technology employs ceramic bearings that are technologically superior to any competitors as well as Cronitect® steel, guarantees that your Campagnolo® are the highest performance solution you can find. Cronitect® steel is highly resistant to corrosion to the point that grease is unnecessary and only a small amount of oil is used.



Technologically advanced superior quality ceramic bearings in addition to the precision machining of the cup/cone structure and absence of grease drastically reduce friction and increase the smoothness of the wheel by as much as 9 times when compared to standard bearings.

An outstanding result achieved by using cutting-edge technologies in the field of materials processing.



Laboratory tests prove the efficiency of CULT™ technology. Spinning a wheel with CULT™ technology at 500 RPM and allowing it to decelerate show the Campagnolo® wheel to continue its motion for a full 45 minutes. In other words, CULT™ ceramic bearings are 9 times more efficient than standard bearings, allowing you to waste less energy, increase your speed and push your limits even farther.

Campagnolo® has a long-standing reputation for the extremely high performance of its hubs in terms of smoothness and reliability. In fact, all the projects are entirely developed in our R&D department and we have put obsessive care into taking care of every detail. The hubs with **USB™ ceramic bearings (ULTRA SMOOTH BEARINGS)** increase smoothness, decrease rolling resistance, reduce weight and reduce the need for maintenance.

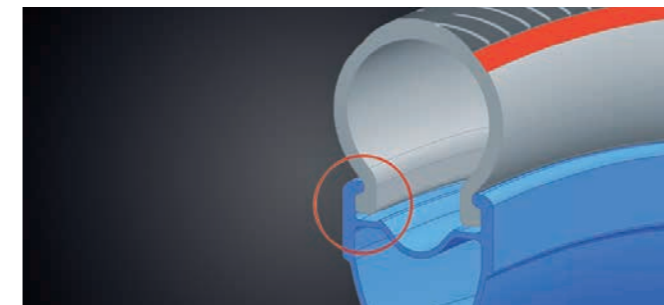
Comparative tests have shown that **USB™ bearings are 50% smoother than standard bearings.**

Now improving your performance during the race or simply going for a ride with your friends will be easier.



The design we have employed for our rims using Ultra-Fit™ Tubeless technology allows the sidewalls of the tire to mate perfectly with the shoulders of the rim.

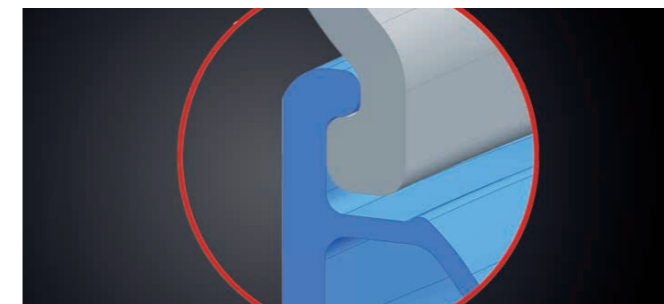
In our tests Ultra-Fit™ Tubeless wheels far surpassed any other wheel fitted with a traditional tire. All energy loss is eliminated by excluding all possible movement between the rim and the tubeless tire. Tubeless tires are exceptionally smooth and have less rolling resistance than traditional clinchers.



Thanks to the rim profile design, ULTRA-FIT™ allows for perfect adherence between the tubeless tire and the rim.

The advantages of ULTRA-FIT™ technologies are:

- easy tire mounting
- maximum safety
- less friction
- less energy dispersion
- improved performance



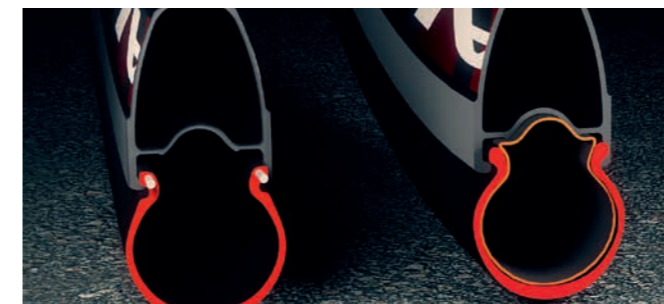
2-Way Fit™ technology makes it possible to mount either tubless or clincher tires on the same rim.

With 2-Way Fit™ Campagnolo® customers can decide on any given day to use either clincher or tubeless tires as the wheel is perfectly compatible with both systems.

With no doubt tubeless tires are the future of road cycling. Apart from greater comfort, the advantages are many: using a tubeless tire you can exploit the greater smoothness due to the absence of friction between the tire and the tube. There are no risks of sudden deflation when a tubeless tire is punctured, a great advantage in terms of safety.

The lack of tubes eliminates puncture risks.

And what if the tubeless tire has a puncture? The Campagnolo® 2-Way Fit™ system allows you to use a traditional inner tube by simply removing the hermetic closure valve to ride home with no problem.



The tubeless tire does not have an inner tube and consequently there is no risk of sudden deflation due to punctures.



The tubeless tire rolls more smoothly thanks to the absence of friction between tire and inner tube.

MoMag™

What is MoMag?

A technology that offers several advantages to the structural integrity of the wheel as well as eliminating the need for rim tape. The name derives from "Mounting Magnet" system, shortened to MoMag™.

How does it work?

The nipples, once inserted inside the rim via the valve hole, are "guided" to the point of connection with the spoke by means of the magnet. This simple but ingenious system makes it possible to have a wheel without holes on the upper bridge, but with spokes tensioned by traditional nipples!

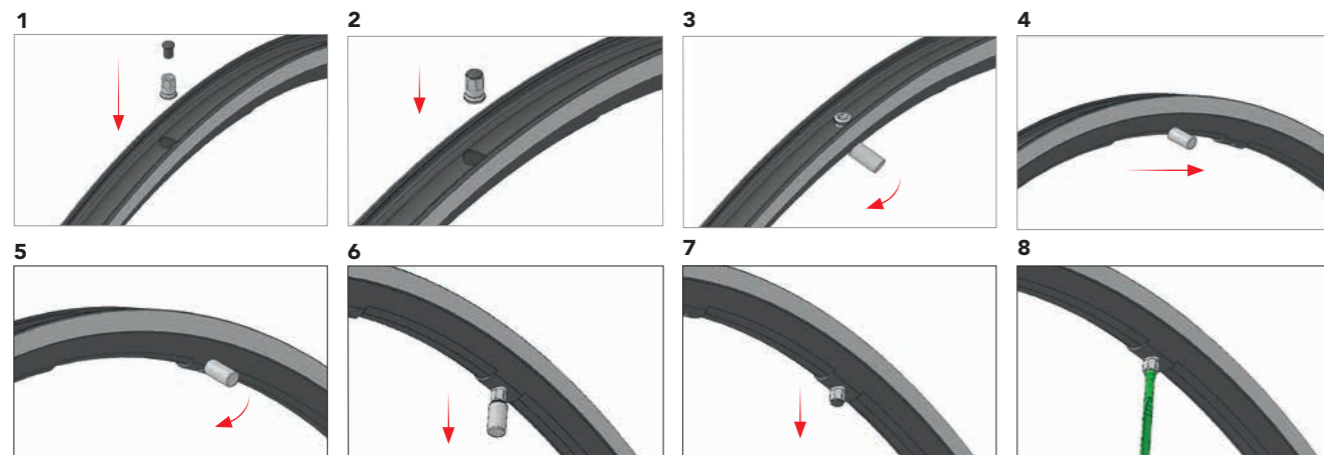
Advantages

No holes on the rim means that the rim is uniform at every point, free from stress points or zones of weakness and, for the clincher profiles no rim tape is required, to the benefit of weight reduction.

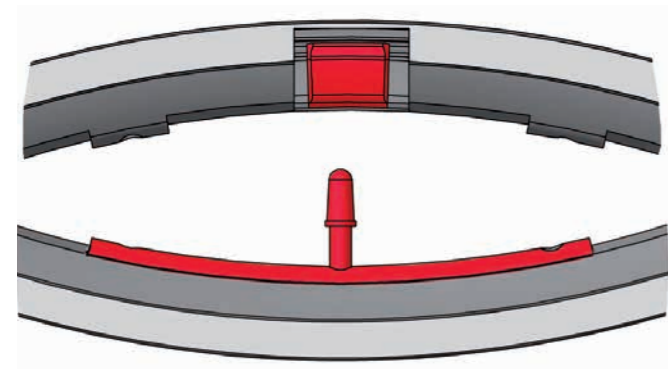
The advantages are immediately clear: greater rim lifetime, greater resistance to fatigue, the possibility to give the spokes greater tension, and greater stiffness which, in terms of performance, mean greater reactivity and acceleration.

But that's not all. The advantages also include extremely quick and simple maintenance and spoke replacement.

All to the benefit of cyclists who choose Campagnolo®.

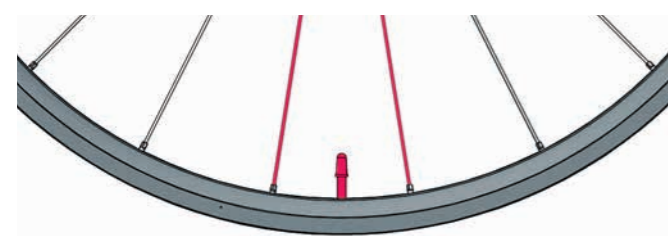


DYNAMIC BALANCE™



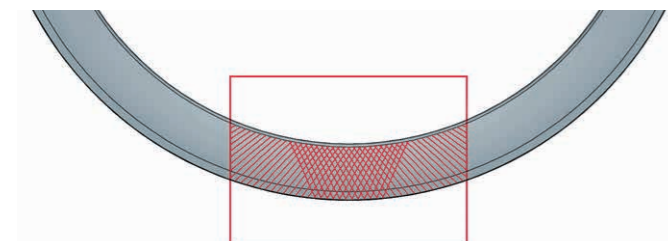
RIM Dynamic Balance™ – Aluminum wheels.

The concept is simple and elegant: balance the weight of the gasket, with an item of similar weight placed on the exact opposite side. For top models, this is obtained by a special operation on the section of the rim opposite the rim joint.



SPOKES Dynamic Balance™

For entry-level models, Dynamic Balance™ is obtained by using two oversized spokes in the section opposite the joint. The result is a wheel with perfectly balanced rotational dynamics.



RIM Dynamic Balance™ – Carbon wheels.

For carbon wheels the principle is the same, but applied using a different technology. When making carbon rims, the pieces of carbon fabric are aligned in such a manner that the resulting rim is always balanced.

G3 SPOKING™

G3™ geometry: we have reinvented the wheel ... not just its look.

Campagnolo® has developed an assembly architecture which, compared with a traditional wheel, makes it possible to improve energy transfer, reduce the stress on the spokes on the right and increase transverse rigidity. This is achieved because in G3™ geometry the right-hand side of the rear wheel is fitted with twice as many spokes as the left.

The results of G3™ system are truly extraordinary: **better transfer of the driving torque**, better lateral rigidity, reduction of the stress in the rear wheel spokes. And thanks to the G3™ system that compensates for the forces acting on the 2 sides of the wheel, there are no more wheel vibrations, even for heavier people.

The 2014 range sees the G3™ technology trickle down even further thus bringing higher performance within the reach of all. G3™ becomes **Mega-G3™** thanks to the **oversize flange** and an increase in lateral and torsional stiffness results.



SPOKE ANTI-ROTATION SYSTEM

The CCampagnolo® Bora™ Ultra, Bora™ One, Bullet™ Ultra, Bullet™, Shamal™, Eurus™, Zonda™ and Scirocco™ wheels feature a spoke antirotation system patented by Campagnolo® that raises spoke performance to an unprecedented level.

Campagnolo® designers studied the spoke-hub interface from the ground up to create a coupling system that would keep the spokes always in the exact identical position. This means that the spokes of Campagnolo® wheels do not rotate, so there is no loss of tension during use and the aerodynamic penetration is not compromised.





BORA™ ULTRA™ TT



Tubular: 975 g NEW

In the race against time the stopwatch is your most feared adversary. To have an advantage over him you need not only great physical condition but also a technological advantage in the form of the best equipment. Campagnolo® engineers have worked painstakingly to produce the newest evolution of the disk wheel, the BORA™ ULTRA™ TT. Campagnolo continues a long history of TT victories with the Bora™ Ultra™ TT and with its extreme lightweight, efficient aerodynamics, low rolling resistance and highly reactive performance this wheel is sure to bring along an even longer list of victories.

Right side



Left side



QUICK RELEASE



Completely redesigned and lighter aerodynamic profile wheel block.

RIM



Full High Modulus Carbon rim for tubular



Brake pads made especially for carbon wheels:
the special blend increases the brake performance on both dry and wet surfaces without increasing the wear and tear on the pad or wheel.

Braking surface:
newly developed full carbon rim uses carbon braking surface in an effort to add uniform braking performance in addition to saving weight.

DISC



Full carbon disc in a specially developed weave

Profile:
extreme new design reduces profile on both drive and non-drive sides for an even slimmer and more aerodynamic design.

New graphics:
Renewed graphics are the perfect match for the new Bora™ Ultra™ wheels.

HUB



Bearings with CULT™ technology:
the combination between the highest quality ceramic bearings and housing in special Cronitect® steel. CULT™ makes the wheel nine times smoother than the standard system of steel bearings.

Cup and cone bearings:
easy bearing adjust – reduces possible bearing play – precision operation – maintains performance over time.

Lightweight and extremely rigid aluminum hub construction

Cassette:
compatible with Campagnolo® 10 and 11 speed cassettes as well as Shimano Inc. 9, 10, and 11 speed cassettes.

CARBON WHEELS

The carbon fiber used by Campagnolo® is unrivalled and so, thanks to studies by the Campy Tech Lab™ designers, Campagnolo® carbon wheels have become a market benchmark.

In 2015, the Bora family will be made over, not only with an increase in the width of the rim to better adapt to the new tires on the market and so guarantee maximum safety levels, aerodynamics and comfort, but also with introduction of the new well dedicated to the clincher on all Bora™ 35 and 50 wheels: no more worrying about a puncture during training – from today you are free to use your full-carbon wheel whenever you go out on your bike!

BORA™ ULTRA™ TT	83
BORA™ ULTRA™ 80	84
BORA™ ULTRA™ 50	85
BORA™ ULTRA™ 35	86
BORA™ ONE™ 50	87
BORA™ ONE™ 35	88
HYPERON™ ULTRA™	89

BORA™ ULTRA™ 80



Tubular: 1520 g **NEW**

The Bora name is synonymous not only with a famous wind but also with the highest performing wheels in the professional peloton. The relatively new 80mm rim profile is yet another high performance option from the Bora™. Extremely light, lightning quick reactivity and highly aerodynamic the Bora™ Ultra™ 80 is a wheel that commands respect. Add CULT™ bearings that make it 9 times smoother than a traditional system and this wheel strikes fear into its adversaries. Designed for professionals, available to everyone. The Bora™ Ultra 80 becomes even lighter thanks to the new water transfer graphics that also gives this wheel the elegance it deserves.

Rear wheel
Bright label

Front wheel
Dark label



QUICK RELEASE



Completely redesigned and lighter aerodynamic profile wheel block.

RIM



Full carbon high profile for 80mm tubular

SPOKES



Spokes with aerodynamic profile: provides the maximum aerodynamic penetration. Reduces aerodynamic drag saving rider energy.

HUB



Carbon fibre hub: provides a high degree of lateral stiffness and reduces weight to the minimum.

Aluminium axle



Exclusive pressing system for the rim in unpainted carbon: enables an extremely limited weight.

Brake pads made especially for carbon wheels:

the special blend increases the brake performance on both dry and wet surfaces without increasing the wear and tear on the pad.

Dynamic balancing on the rim



Exclusive G3™ spoke pattern: perfect balance of the spoke tensions on both sides of the wheel. Reduces stress, increases transversal rigidity and the transmission of power to the wheel. G3™ eliminates vibrations even with "heavy" cyclists.

Self-locking aluminium nipples



Ball bearings with CULT™ technology: the combination between the highest quality ceramic bearings and housing in special Cronitect® steel. CULT™ makes the wheel nine times smoother than the standard system of steel ball bearings.

Oversized flange: greater torsional stiffness and greater reactivity.

Cup and cone bearings

BORA™ ULTRA™ 50



Tubular: 1215 g | Clincher: 1435 g **NEW**

Innovating the wheel that for years has been a market benchmark might have seemed difficult and risky, but the Campy Tech Lab™ designers have managed to maintain those characteristics of flexibility and ease of handling that have made this high-profile wheel easy to steer, high performing and safe. The new Bora™ Ultra™ 50 bursts onto the market not only with introduction of the new well dedicated to the clincher, but also with improvements to the previous version in terms of lightness, aerodynamics, stiffness and comfort thanks to use of the new wider rim and front and rear hubs with different diameters. Plus extremely clean-cut aesthetics guaranteed by innovative water transfer graphics. All without giving up on the extreme smoothness, which has become the market benchmark and is the result of use of CULT™ bearings.

Rear wheel
Bright label

Front wheel
Dark label



QUICK RELEASE



Completely redesigned and lighter aerodynamic profile wheel block.

RIM



New full-carbon rim, 24.2 mm wide, for tubulars and clinchers: great comfort and maximum aerodynamics for interacting with new tire standards. Extremely high lateral wheel stiffness and reactivity.

Exclusive rim printing system: rim painting no longer required. The weight is greatly reduced and the surface is free from imperfections.

Brake pads made especially for carbon wheels

3Diamant™ - brake surface treatment: this process eliminates the "breaking-in" period, improves braking performance under both wet and dry conditions and creates a more linear and smooth overall braking performance.

RDB™ Rim Dynamic Balance

SPOKES



Spokes with aerodynamic profile: provides the maximum aerodynamic penetration. Reduces aerodynamic drag saving rider energy.



Exclusive G3™ spoke pattern: perfect balance of the spoke tensions on both sides of the wheel. Reduces stress, increases transversal rigidity and the transmission of power to the wheel. G3™ eliminates vibrations even with "heavy" cyclists.

Self-locking aluminium nipples

HUB



Carbon fibre hub: provides a high degree of lateral stiffness and reduces weight to the minimum.

CULT™: the combination of the highest quality ceramic bearings with housing in special Cronitect® steel. Nine times smoother than the standard system. Eliminates oxidation and maintains performance over time.

Cup and cone bearings: easy bearing adjustment.

Oversized flange: greater torsional stiffness and greater reactivity.

Aluminium axle

BORA™ ULTRA™ 35



Tubular: 1170 g | Clincher: 1360 g

NEW

The Bora™ Ultra™ 35 met great request from Nairo Quintana and the other champions using Campagnolo®, accompanying them on all their successes, from the Tour 2013 onwards. In line with continual evolution of its products, for 2015 Campagnolo® launches the new clincher and tubular versions for the 35 mm wheel, maintaining the versatility of a wheel that brings results on any terrain and in any weather, and adding the advantages of the new generation. Thanks to the wide, aerodynamic profile, the differentiated diameter of the hubs and CULT™ bearings, every user will be able to race with the performance of champions and brake in total safety, in any conditions, thanks to 3Diamant™ technology on the braking track.

Rear wheel
Bright label



Front wheel
Dark label



QUICK RELEASE

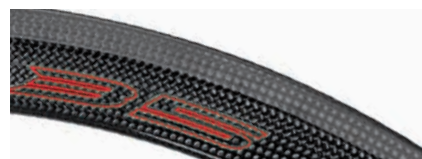


Completely redesigned and lighter aerodynamic profile wheel block.

RIM



New full-carbon rim, 24.2 mm wide, for tubulars and clinchers: great comfort and maximum aerodynamics for interacting with new tire standards. Extremely high lateral wheel stiffness and reactivity.

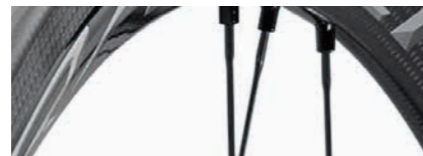


3Diamant™ - brake surface treatment

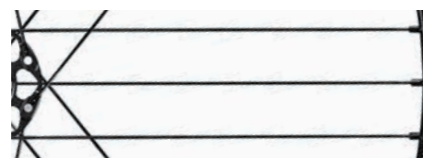
Brake pads made especially for carbon wheels

Dynamic balancing on the rim

SPOKES



Aerodynamic profile in steel: ensuring the maximum aerodynamic penetration and, thanks to the material employed, lower weight and greater reactivity.



Exclusive G3™ spoke pattern: perfect balance of the spoke tensions on both sides of the wheel. Reduces stress, increases transversal rigidity and the transmission of power to the wheel. G3™ eliminates vibrations even with "heavy" cyclists.

Self-locking aluminium nipples

HUB



Carbon fibre hub: provides a high degree of lateral stiffness and reduces weight to the minimum.



Oversized flange: greater torsional stiffness and greater reactivity.

CULT™: the combination of the highest quality ceramic bearings and housing in special Cronitect® steel. Nine times smoother than the standard system.

Cup and cone bearings

Aluminium axle

BORA™ ONE™ 50



Tubular: 1265 g | Clincher: 1485 g

NEW

Features of this wheel are the height of its rim, capable of winning while sprinting with Greipel or racing uphill with Valverde, a new width that ensures comfort, stiffness, reactivity and cutting-edge aerodynamic performance, 3Diamant™ finish on the braking track for powerful, modular braking, exclusive G3™ spokes combined with external nipples for always efficient maintenance, different diameters on front and rear hubs with cone/cup system and USB™ bearings that offer the Bora™ One 50 client a smoothness that is however superior to traditional systems. All this makes it the ideal choice for competitive cyclists at any level and, from today, also for amateurs thanks to the arrival of the clincher version.

Rear wheel
Bright label



Front wheel
Dark label



QUICK RELEASE



Completely redesigned and lighter aerodynamic profile wheel block.

RIM



New full-carbon rim, 24.2 mm wide, for tubulars and clinchers: great comfort and maximum aerodynamics for interacting with new tire standards. Extremely high lateral wheel stiffness and reactivity.

Exclusive rim printing system: rim painting no longer required. The weight is greatly reduced and the surface is free from imperfections.

3Diamant™ - brake surface treatment

Brake pads made especially for carbon wheels.

RDB™ Rim Dynamic Balance: the new blend increases the brake performance on both dry and wet surfaces without increasing the wear and tear on the pad. For a more modular and more secure stop.

SPOKES



Spokes anti-rotation system™: allows the spokes to maintain the best aerodynamic position.



Exclusive G3™ spoke pattern: perfect balance of the spoke tensions on both sides of the wheel. Reduces stress, increases transversal rigidity and the transmission of power to the wheel. G3™ eliminates vibrations even with "heavy" cyclists.

Spokes with aerodynamic profile

HUB



Oversized flange: greater torsional stiffness and greater reactivity.



Aluminium hub body

Cone/cup bearings system: High-performance ceramic bearings teamed with the cone/cup system ensure long-lasting performance, make adjustment easier, reduce possible play and improve smoothness.

Aluminium axle: reduces the weight of the wheel.

USB™ ceramic ball bearings: reduces friction, provides greater smoothness, and maintains performance over time.

BORA™ ONE™ 35



Tubular: 1215 g | Clincher: 1406 g

NEW

Even the youngest in the Bora™ family transforms in the new 2015 version: 24.2 mm wide, 35 mm tall rim, water transfer graphics, braking track with 3Diamant™ treatment, radial spokes on the front wheel and G3™ on the rear, external nipples, hubs in aluminum with differentiated front and rear diameters with new adjustment ring, ceramic USB™ bearings, aluminum freewheel bodies and aerodynamic quick release are just some of the strong points that are difficult to fully appreciate until you use the tubular Bora™ One 35 in challenges against regular adversaries or the clincher version in those with training companions.

Rear wheel
Bright label

Front wheel
Dark label



QUICK RELEASE



Completely redesigned and lighter aerodynamic profile wheel block.

RIM



New full-carbon rim, 24.2 mm wide, for tubulars and clinchers: great comfort and maximum aerodynamics for interacting with new tire standards. Extremely high lateral wheel stiffness and reactivity.

3Diamant™ - brake surface treatment: this process eliminates the "breaking-in" period, improves braking performance under both wet and dry conditions and creates a more linear and smooth overall braking performance.

Brake pads made especially for carbon wheels

RDB™ Rim Dynamic Balance: the new blend increases the brake performance on both dry and wet surfaces without increasing the wear and tear on the pad. For a more modular and more secure stop.

SPOKES



Spokes anti-rotation system™: allows the spokes to maintain the best aerodynamic position.



Exclusive G3™ spoke pattern: perfect balance of the spoke tensions on both sides of the wheel. Reduces stress, increases transversal rigidity and the transmission of power to the wheel. G3™ eliminates vibrations even with "heavy" cyclists.

Spokes with aerodynamic profile

HUB



Oversized flange: greater torsional stiffness and greater reactivity.



Aluminium hub body

Cone/cup bearings system: high-performance ceramic bearings teamed with the cone/cup system ensure long-lasting performance, are easier, reduce possible play and improve smoothness.

Aluminium axle: reduces the weight of the wheel.

USB ceramic ball bearings: reduces friction, provides greater smoothness, and maintains performance over time.

HYPERON™ ULTRA™ TWO

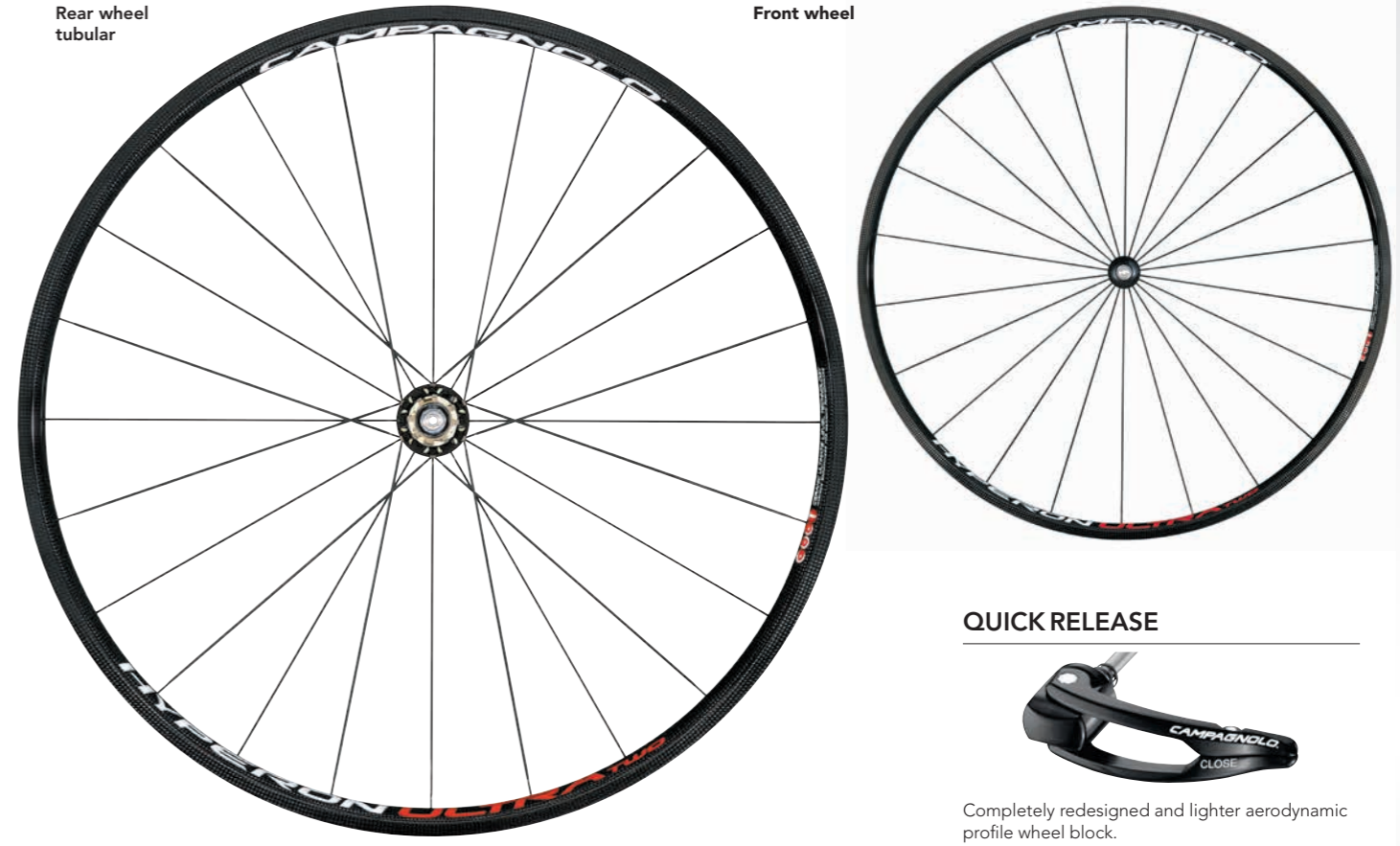


Clincher: 1345 g | Tubular: 1231 g

Accelerate on every incline, take on the longest climbs and have no fear of crosswinds with the Hyperon™ Ultra™ Two. The low-profile full-carbon wheelset that the professional athlete has turned to time and time again. CULT™ bearings that are 9 times smoother than traditional bearings, extremely lightweight and incredibly stiff this wheelset is the embodiment of performance. Available in both tubular and clincher version

Rear wheel
tubular

Front wheel



QUICK RELEASE



Completely redesigned and lighter aerodynamic profile wheel block.

RIM



Full carbon: extremely reduced drag. A high lateral rigidity value and responsiveness to the wheel.

Exclusive rim printing system

Brake pads made especially for carbon wheels

RDB™ Rim Dynamic Balance: exclusive system that assures perfect balancing of the rim even at high speeds. Moulded into the rim itself. (tubular version)

Spokes Dynamic Balance: exclusive system that assures perfect balancing of the rim even at high speeds. Moulded into the rim itself. (clincher version)

SPOKES



Steel, aerodynamic spokes: allows for the high degree of air penetration.

HUB



Carbon fibre hub: provides a high degree of lateral stiffness and reduces weight to the minimum.



Oversized flange (clincher version): greater torsional stiffness and greater reactivity.

CULT: the combination of the highest quality ceramic bearings and housing in special Cronitect™ steel. Nine times smoother than the standard system.

Cup and cone bearings



BULLET™ ULTRA™



Clincher: 1590 g

Campagnolo® performance and quality in an ALuminum- Carbon construction. The Bullet™ Ultra™ offers serious performance advantages for the expert rider while including an aluminum braking surface. Special aluminum-carbon construction method coupled with an oversize hub, G3™ spoke lacing pattern and DRSC™ (Directional Rim-Spoke Coupling) system makes for an explosive wheelset that is both responsive and precise. Superior quality bearings also ensure efficiency and smooth functionality. Available in both "Dark" and "Bright" versions.

Rear wheel
Bright label



Front wheel
Dark label



QUICK RELEASE



Completely redesigned and lighter aerodynamic profile wheel block.

ALUMINIUM/CARBON WHEELS

Aerodynamic advantages aren't only for professional athletes. They give benefits to all cyclists. With Campagnolo's alu-carbon line of wheels you too can take advantage of aero and use it to slip by the competition.

The performance profiles are derived from the world-class and widely coveted BORA full carbon line but offer the benefit of an aluminum braking surface.

BULLET™ ULTRA™	91
BULLET™ ULTRA™ 80	92
BULLET™	93
BULLET™ 80	94

RIM



Exclusive molding system for the rim eliminates the need for paint

Dynamic balancing on the rim



Integrated aluminium/carbon rim structure: the exclusive coupling system of the aluminium rim and carbon structure makes the rim extremely rigid, it allows for excellent responsiveness levels and durability of the wheel.

MoMag™: allows the external profile of the rim to be free of holes – increases structural resistance – makes rim tape unnecessary and reduces the weight of the wheel.

SPOKES



G3™ Spoke pattern

Self-locking oversize aluminium nipples



Spokes anti-rotation system: keeps the spokes in the position of maximum aerodynamic penetration.

DRSC™ (Directional Rim-Spoke Coupling): exclusive rim/spoke coupling system. It allows the rim, spokes, nipples and hub to align properly with the same tensioning value in all areas.

Aerodynamic profile in steel

HUB



2 different bearing options: configure the wheel according to your needs:

1. USB™ ceramic bearings
2. bearings with CULT™ system.



Oversized flange on the drive side: increases the torsional stiffness, increasing reactivity at each change in rhythm of the pedal stroke.

Aluminium axle

Aluminium hub body

Cup and cone bearings

BULLET™ ULTRA™ 80mm



Clincher: 1770 g

Grab the handlebars, lower your head and pedal away as the Bullet™ Ultra™ 80mm will take care of the rest. A meticulously studied rim profile and carbon layup was developed to obtain the maximum in aerodynamic performance and responsiveness. Lightweight carbon profile with a surefooted aluminium braking surface make the Bullet™ Ultra™ 80mm a perfect choice both for cheating the wind as well as braking more aggressively.

Rear wheel
Bright label

Front wheel
Dark label

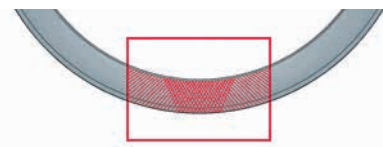


QUICK RELEASE



Completely redesigned and lighter aerodynamic profile wheel block.

RIM



Dynamic balancing on the rim

Exclusive molding system for the rim eliminates the need for paint



Integrated aluminium/carbon rim structure:
the exclusive coupling system of the aluminium rim and carbon structure makes the rim extremely rigid, it allows for excellent responsiveness levels and durability of the wheel.

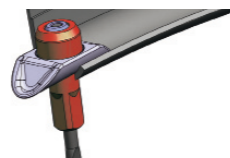
MoMag™:
allows the external profile of the rim to be free of holes – increases structural resistance – makes rim tape unnecessary and reduces the weight of the wheel.

SPOKES



Exclusive G3™ Spoke pattern

Aerodynamic profile in steel



DRSC™ (Directional Rim-Spoke Coupling):
exclusive rim/spoke coupling system. It allows the rim, spokes, nipples and hub to align properly with the same tensioning value in all areas.

Spokes Anti-rotation System™

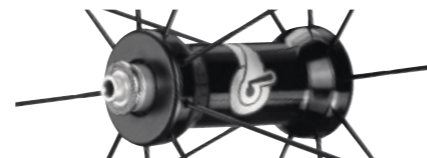
Self-locking oversize aluminium nipples

HUB



2 different bearing options:
configure the wheel according to your needs:

1. USB™ ceramic bearings
2. bearings with CULT™ system.



Aluminium hub body

Oversized flange on the drive side

Cup and cone bearings:
easy bearing adjustment – reduces possible bearing play – precision operation – maintains performance over time.

Aluminium axle

BULLET™

Clincher: 1755 g

Campagnolo enthusiasts have been waiting for this wheel for a long time. Their wait has been rewarded with a product that definitely exceeds all expectations. Indeed Bullet™ is not only an attractive design: Behind their confident and aggressive design and graphics, there is also “top-class” performance. A carbon wheel with all the benefits of the aluminium braking track: responsive and agile when needed, it can also be comfortable and “docile” on every kind of track.

Rear wheel

Front wheel



QUICK RELEASE



Completely redesigned and lighter wheel block Steel spine and eccentric, lever with drill lightening and aluminium die.

RIM



Integrated aluminium/carbon rim structure:
the exclusive coupling system of the aluminium rim and carbon structure makes the rim extremely rigid, it allows for excellent responsiveness levels and durability of the wheel.

Exclusive molding system for the rim eliminates the need for paint

Dynamic balancing on the rim

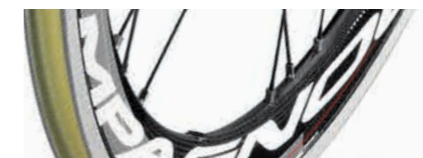
MoMag™:
allows the external profile of the rim to be free of holes – increases structural resistance – makes rim tape unnecessary and reduces the weight of the wheel.

SPOKES



Spokes Anti-rotation System™

Self-locking nipples:
it allows to maintain the right tension of the spokes and does not require any maintenance.



G3™ Spoke pattern

DRSC™ (Directional Rim-Spoke Coupling):
exclusive rim/spoke coupling system. It allows the rim, spokes, nipples and hub to align properly with the same tensioning value in all areas.

Aerodynamic profile in steel

HUB



Aluminium hub body:
gives the wheel a high degree of lateral stiffness and reduces weight to the minimum.



Oversized flange on the drive side:
increases the torsional stiffness, increasing reactivity at each change in rhythm of the pedal stroke.

BULLET™ 80mm

Clincher: 1930 g

Pure speed. The 80 mm rim cuts through the air like a knife and the km/h increase at every pedal stroke. The special structure of the aluminium and carbon rim gives Bullet™ an extreme rigidity that instantly turns into power and responsiveness. With an impressive and distinctive design, thanks to Bullet™ your bike will have a new look, turning into a true machine against time.

Rear wheel



Front wheel

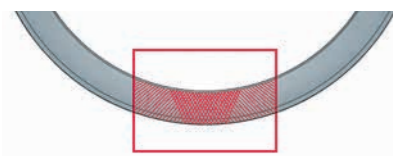


QUICK RELEASE



Completely redesigned and lighter wheel block.

RIM



Dynamic balancing on the rim

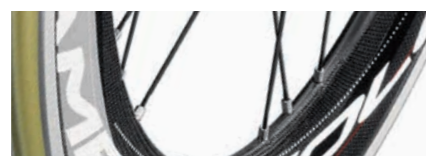
Exclusive molding system for the rim eliminates the need for paint



Integrated aluminium/carbon rim structure: the exclusive coupling system of the aluminium rim and carbon structure makes the rim extremely rigid, it allows for excellent responsiveness levels and durability of the wheel.

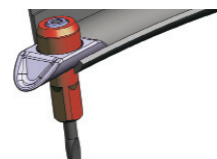
MoMag™: allows the external profile of the rim to be free of holes – increases structural resistance – makes rim tape unnecessary and reduces the weight of the wheel.

SPOKES



G3™ Spoke pattern

Self-locking nipples: it allows to maintain the right tension of the spokes and does not require any maintenance.



DRSC™ (Directional Rim-Spoke Coupling): exclusive rim/spoke coupling system. It allows the rim, spokes, nipples and hub to align properly with the same tensioning value in all areas.

Spokes anti-rotation system

Aerodynamic profile in steel

HUB



Oversized flange on the drive side: increases the torsional stiffness, increasing reactivity at each change in rhythm of the pedal stroke.



Aluminium hub body: gives the wheel a high degree of lateral stiffness and reduces weight to the minimum.





SHAMAL™ MILLE™



Clincher: 1426 g **NEW**

Evolution of the Shamal™ Ultra in terms of aesthetics and braking performance is called Shamal™ Mille. The special ceramic Plasma Electrolytic Oxidation give the rim an elegant finish, as does the matte black of the hub, spokes and quick release. But it is on the braking performance that the Campy Tech Lab™ engineers have made yet another step forward: the refined spiral groove on the braking track allows a reduction in braking times on both wet and dry terrain and guarantees maximum silence even when braking sharply. The special ceramic treatment has been studied to work with the new Campagnolo® blue brake pad and gives best results when used with a Campagnolo® brake with the pad always thoroughly cleaned.

Rear wheel

Front wheel



QUICK RELEASE



Aerodynamic, lightened and with matte black finish.

ALUMINIUM WHEELS

From the noble Shamal™ Ultra to the Khamsin™, via the reliable Zonda™, the ever smooth Neutron™ Ultra and the winning profile of the Scirocco™ 35 mm: the Campagnolo® range in aluminum is unrivalled on the market and as of today sees the addition of a fine article called Shamal™ Mille. An aluminum wheel coated with the ceramic Plasma Electrolytic Oxidation that once again raises the bar of braking performance and the aesthetic appeal of Italian design. Whatever your need, your choice must be made from the Campagnolo® range.

SHAMAL™ MILLE™	97
SHAMAL™ ULTRA™	98
EURUS™	99
ZONDA™	100
SCIROCCO™	101
VENTO™ ASYMMETRIC™	102
KHAMSIN™ ASYMMETRIC™	103
NEUTRON™ ULTRA™	104

RIM



Plasma Electrolytic Oxidation: it offers elegant finish and enhances braking power and modularity

Toroidal milling



Spiral groove on the braking track: it reduces braking distance while maintaining silent braking

Profile in light alloy for C15 clincher: can be used with the traditional clincher and inner tube system

Differentiated rim height: 25.5 mm for the front, 29.5 mm for the rear

Dynamic Balance: perfect rim balance

SPOKES



Aerodynamic spokes in aluminum: maximum air penetration, less weight and greater reactivity.



Differentiated spokes: 16 radial spokes for the front, 21 spokes for the rear, doubled on the right and exclusive G3 spokes to reduce vibration, increase transverse stiffness and transmission of power to the wheel.

External nipples in aluminum: maximum maintenance speed.

Spokes Anti-rotation System: it keeps the spokes in a position of maximum aerodynamics.

HUB



Oversized flange: it increases torsional stiffness, increasing its reactivity at every change in the cyclist's pace.



Hub body in carbon: high lateral stiffness, reducing weight to a minimum

Axle in aluminum: it reduces wheel weight.

Ceramic USB bearings with differentiated diameters: 28 mm for the front, 30 mm for the rear. Less friction, less weight, greater smoothness and the same performance over time.

SHAMAL™ ULTRA™



2-Way Fit™: 1440 g | Clincher: 1425 g | Tubular: 1425 g

Always staying ahead of the pack. As in the 2-Way Fit™ version, the Shamal™ Ultra™ wheels for tubular or clincher, roll to the starting line with the best performance ever. Mega-G3™ and the oversized flange make this wheel extremely quick off the line and reactive, featuring a full 17% increase in reactivity over the previous version! This incredible improvement in performance, along with the extreme smoothness of the ceramic ball bearings, will enable you to transfer all the power of your pedal stroke when accelerating on level ground as well as in explosive sprints or a climb. The Shamal™ Ultra™ clincher is available in the Dark and Bright Label versions.

Rear wheel
Dark label

Front wheel
Bright label



QUICK RELEASE



Steel spine and eccentric, lever with drill lightening and aluminum die.

RIM



Toroidal milling: reduces the peripheral weight of the rim – makes the wheel extremely reactive.

Dynamic Balance™



2-Way Fit™ profile: allows you to use either the classic clincher or the innovative tubeless tire.

Ultra-Fit™: easy tire mounting – maximum safety – less friction – less energy dispersion – improved performance.

MoMag™: allows the external profile of the rim to be free of holes.

Differentiated rim height: 26mm at the front; 30mm at the rear.

SPOKES



Spokes Anti-rotation System™:

perfect balance of the spoke tensions on both sides of the wheel. Reduces stress, increases transversal rigidity and the transmission of power to the wheel. G3™ eliminates vibrations even with "heavy" cyclists.

Aluminium nipples



Exclusive Mega-G3™ spoke pattern: perfect balance of the spoke tensions on both sides of the wheel. Reduces stress, increases transversal rigidity and the transmission of power to the wheel. G3™ eliminates vibrations even with "heavy" cyclists.

Aero spokes in aluminium: maximum aerodynamic penetration - lower weight and greater reactivity.

HUB



Oversized flange: increases the torsional stiffness, increasing reactivity at each change of pace of the cyclist.



Carbon fibre hub body: high degree of lateral stiffness – reduces the weight to the minimum.

Aluminium axle

USB™ ceramic ball bearings: reduces friction, provides greater smoothness, and maintains performance over time.

EURUS™



2-Way Fit™: 1485 g | Clincher: 1465 g

The Eurus™ wheel was designed to be both extremely durable and high performance. Lightweight design ready for any course and sturdy construction ready for the toughest terrain make this wheelset an easy choice. Thanks to the oversized flange and innovative Mega-G3™ technology, Eurus™ wheels have made a true leap to become, alongside the Shamal™ Ultra, a reference point for top and aluminum wheels.

Rear wheel

Front wheel



QUICK RELEASE



Steel spine and eccentric, lever with drill lightening and aluminum die.

RIM



Toroidal milling

Differentiated rim height: 26mm at the front; 30mm at the rear.

2-Way Fit™ profile: allows you to use either the classic clincher or the innovative tubeless tire.

Ultra-Fit™: easy tire mounting – maximum safety – less friction – less energy dispersion – improved performance.

MoMag™: allows the external profile of the rim to be free of holes – increases structural resistance – makes rim tape unnecessary and reduces the weight of the wheel.

Dynamic Balance™

SPOKES



Spokes anti-rotation system: keeps the spokes in the position of maximum aerodynamic penetration.



Exclusive Mega-G3™ spoke pattern: perfect balance of the spoke tensions on both sides of the wheel. Reduces stress, increases transversal rigidity and the transmission of power to the wheel. Mega-G3™ eliminates vibrations even with "heavy" cyclists.

Aero spokes in aluminium

Aluminium nipples

HUB



Oversized flange: increases the torsional stiffness, increasing reactivity at each change of pace of the cyclist.



Carbon fibre hub body: high degree of lateral stiffness – reduces the weight to the minimum.

Aluminium axle

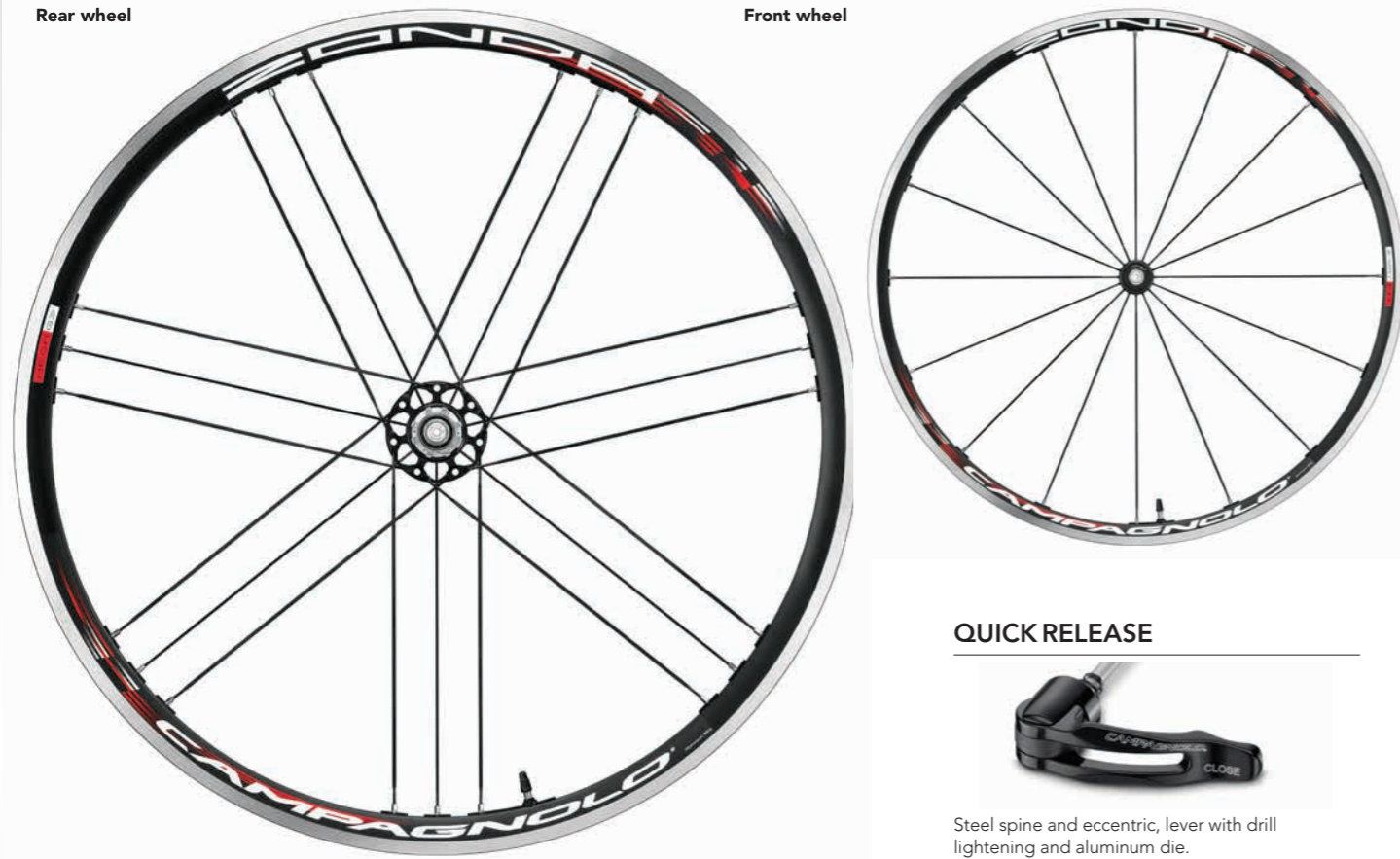
USB™ ceramic ball bearings: reduces friction, provides greater smoothness, and maintains performance over time.

2-Way Fit™: 1570 g | Clincher: 1550 g

The introduction of Mega-G3™ technology in addition to an oversized flange make the Zonda™ wheelset a benchmark for its price point as it offers greater torsional and lateral stiffness which translates to increased power transfer. A solid wheel ready for racing the Zonda™ is ready to perform. Available also in 2-Way Fit™ this wheelset offers an added degree of versatility allowing you to choose between clincher and tubeless tires.

Rear wheel

Front wheel



QUICK RELEASE



Steel spine and eccentric, lever with drill lightening and aluminum die.

RIM



MoMag™: allows the external profile of the rim to be free of holes – increases structural resistance – makes rim tape unnecessary and reduces the weight of the wheel.



Milled rim: reduces the peripheral weight of the rim and makes the wheel extremely reactive.

Differentiated rim height: 26mm at the front to provide optimal handling; 30mm at the rear for transmitting all your power to the wheel.

2-Way Fit™ profile

Ultra-Fit™

Dynamic Balance™

SPOKES



Spokes anti-rotation system

Exclusive Mega-G3™ spoke pattern: perfect balance of the spoke tensions on both sides of the wheel. Reduces stress, increases transversal rigidity and the transmission of power to the wheel. Mega-G3™ eliminates vibrations even with "heavy" cyclists.

Front: 16 spoke variable profile Aero radials in stainless steel.
Rear: 21 spoke variable profile Aero in stainless steel with doubling on the cassette side.

HUB



Oversized flange Mega-G3™: increases the torsional stiffness, increasing reactivity at each change of pace of the cyclist.



Aluminium hub body: provides a high degree of lateral stiffness.

Aluminium axle: reduces the weight of the wheel.

Clincher: 1725g

Introduced last season, the new 35mm profile of the Scirocco™ offers aerodynamic benefits in a lightweight aluminum construction. A versatile 35mm profile provides for aero advantages with low cross wind interference making this wheel the perfect all-conditions solution. Technologically advanced design and profile with an aluminum braking surface make the Scirocco™ ready for any situation.

Rear wheel

Front wheel



QUICK RELEASE

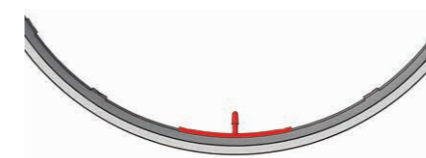


Completely redesigned and lighter aerodynamic profile wheel block.

RIM



35 mm profile for a standard tyre: translates into good penetration while being extremely easy to handle even in a cross wind.



Dynamic Balance™: every point of the rim is counter-balanced by an equal weight on the opposite side. Maximum stability of the wheel even at high speeds.

SPOKES



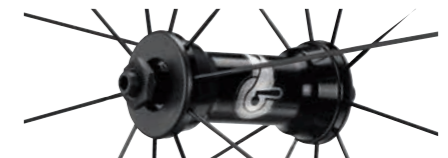
Front: 16 spoke variable profile Aero radials in stainless steel.
Rear: 21 spoke variable profile Aero in stainless steel with doubling on the cassette side.



Exclusive Mega-G3™ spoke pattern: perfect balance of the spoke tensions on both sides of the wheel. Reduces stress, increases transversal rigidity and the transmission of power to the wheel. Mega-G3™ eliminates vibrations even with "heavy" cyclists.

Aerodynamic profile in steel

HUB



Aluminium hub: high side stiffness yet with low weight.



Oversize flange Mega-G3™ cassette side: increases torsional stiffness, greater reactivity with each change in the cyclist's pace.

Aluminium axle: reduces wheel weight.

VENTO™ ASYMMETRIC

MEGA-G3

Clincher: 1660 g

The redesigned VENTO™ ASYMMETRIC takes the same qualities that have made the Vento™ wheel so popular in the past and takes this wheelset to the next level. The new design in addition to the asymmetric rear rim profile offers notable performance increases in terms of both increased lateral and torsional rigidity as well as increased reactivity. New design allows for more homogenous spoke tensions and makes for a sturdier, higher performing wheelset. A race ready wheelset with guaranteed Campagnolo® quality makes the Vento™ Asymmetric a solid choice for any cyclist.

Rear wheel
Mega-G3™

Front wheel



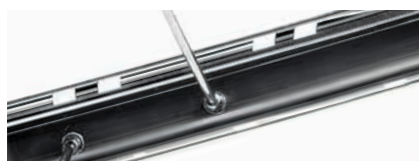
QUICK RELEASE



RIM



35 mm profile for a standard tyre: translates into good penetration while being extremely easy to handle even in a cross wind.



Dynamic Balance™: every point of the rim is counter-balanced by an equal weight on the opposite side. Maximum stability of the wheel even at high speeds.

SPOKES



Front: 16 spoke variable profile Aero radials in stainless steel.
Rear: 21 spoke variable profile Aero in stainless steel with doubling on the cassette side.

Exclusive Mega-G3™ spoke pattern: perfect balance of the spoke tensions on both sides of the wheel. Reduces stress, increases transversal rigidity and the transmission of power to the wheel. Mega-G3™ eliminates vibrations even with "heavy" cyclists.

Aerodynamic profile in steel

HUB



Aluminium hub: high side stiffness yet with low weight.



Over-size flange Mega-G3™ cassette side: increases torsional stiffness, greater reactivity with each change in the cyclist's pace.

Aluminium axle: reduces wheel weight.

KHAM SIN™ ASYMMETRIC

MEGA-G3

Clincher 1750 g

The redesigned Khamsin™ Asymmetric represents the entry level for Campagnolo® wheels only because of its fantastic pricing. With advanced characteristics such as Mega-G3™ spoke lacing patterns, oversized flange and Spoke Dynamic Balance™ technology it is clear that this wheel is a step above its competition. Campy Tech Lab™ engineers have pushed the quality of this wheel even further incorporating an asymmetric rear rim that, when coupled with Mega-G3™ lacing provides increased performance in terms of lateral and torsional rigidity as well as reactivity. Available in both Mega-G3™ and traditional lacing patterns, the Khamsin™ Asymmetric permits all cyclists with the opportunity to experience Campagnolo® quality and performance.

Rear wheel
Mega-G3™

Front wheel



Rear wheel
radial lacing pattern

RIM



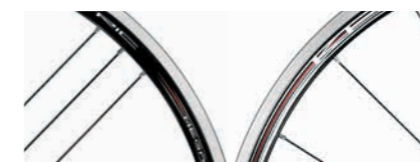
Differentiated rim height: 24 mm at the front to provide optimal handling; 27,5 mm at the rear for transmitting all your power to the wheel.



New asymmetric rim profile: asymmetrical rear rim profile allows for better balancing of spoke tensions between drive and non drive side, giving better symmetry to an asymmetric component. Increased efficiency and reactivity are sure to be noted.

Dynamic Balance™: every point of the rim is counter-balanced by an equal weight on the opposite side. Maximum stability of the wheel even at high speeds.

SPOKES



Available in two versions of rear wheel:
- radial lacing pattern of spokes
- exclusive Mega-G3™ spoke pattern: perfect balance of the spoke tensions on both sides of the wheel. Reduces stress, increases transversal rigidity and the transmission of power to the wheel. Mega-G3™ eliminates vibrations even with "heavy" cyclists.

Straight-head spoke (left side): maximum stiffness of the wheel – maintains the spoke tension and long-lasting performance.

HUB



Oversized flange: increases the torsional stiffness, increasing reactivity at each change of pace of the cyclist.



Aluminium axle: reduces the weight of the wheel.

Sealed bearings: maintains performance over time – longer bearing life.

QUICK RELEASE

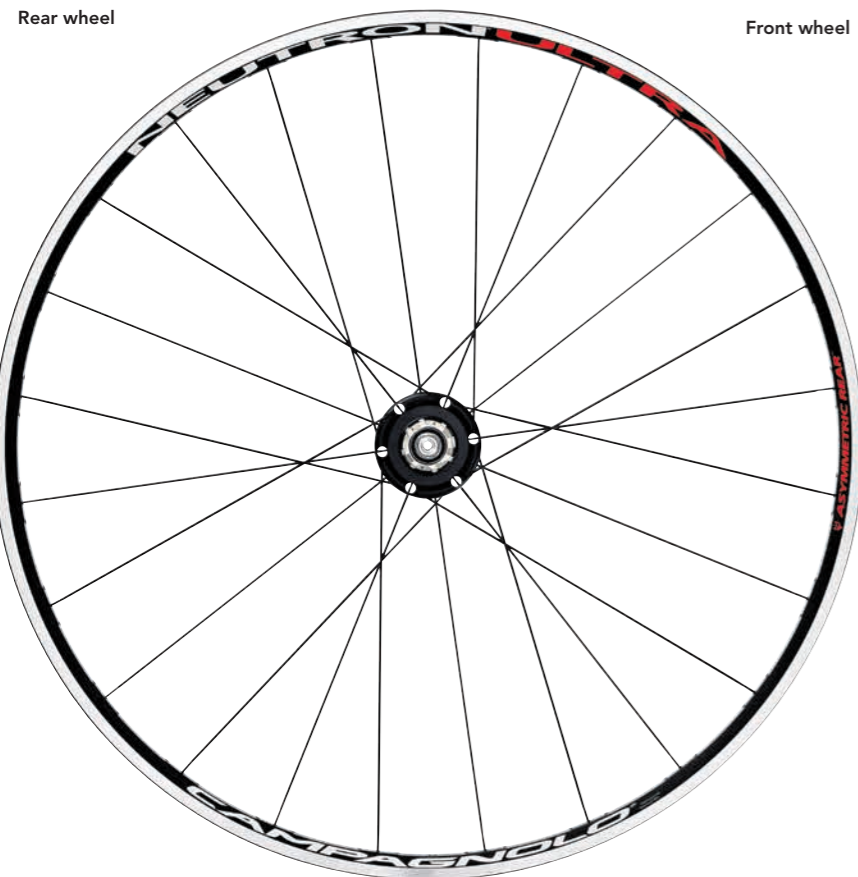


NEUTRON™ ULTRA™

Clincher: 1470 g

Classic. And never skips a beat. The Neutron™ Ultra™ are now a well-established symbol of success for Campagnolo® wheels. Sought after by professionals and amateur cyclists alike, its characteristics are inimitable. Super lightweight on inclines and extremely reliable; they can be responsive when called upon, or comfortable against the hard pavement, even after hours in the saddle. The Neutron™ Ultra™ encompasses everything a cyclist requires.

Rear wheel



Front wheel



QUICK RELEASE



Steel spine and eccentric, lever with drill lightening and aluminum die.

RIM



The exclusive geometry of the polygonal rim: allows for an elastic rim, which is both comfortable and extremely responsive at the same time.



Rear rim with an asymmetrical drilling: allows for a perfect alignment of the nipples and hub for better spoke tension, leaving no weak points.

Milled, low-profile rim: reduces the peripheral weight of the rim, and makes the wheel responsive and fast, especially in up-hill rides.

SPOKES



Straight-head steel spokes in variable sections: maximum wheel torsional stiffness. Spoke tension is maintained and guaranteed performance with the best aerodynamics. Stability even at high speeds.

HUB



Carbon fibre hub body: high degree of lateral stiffness – reduces the weight to the minimum.



Oversized flange: increases the torsional stiffness, increasing reactivity at each change of pace of the cyclist.

Cup and cone bearings: easy bearing adjustment – reduces possible bearing play – precision operation – maintains performance over time.





TECH DATA

Over the course of the previous pages in this catalog you can find a great deal of general information regarding every Campagnolo product. However, if you need more specific information and technical data we have compiled an even greater resource in the following section.

Should you need yet more information please visit:
www.campagnolo.com

Please note that we reserve the right to change products, surface finish and specifications at any moment without prior notice.

ELECTRONIC GROUPSETS	122
GROUPSETS	128
WHEELS	138

WHEELS TECHNICAL SPECIFICATIONS

NOMINAL WEIGHT (g)*	RIM MATERIAL	RIM SECTION: HEIGHT/WIDTH - mm (NOMINAL)	ULTRA-FIT™	ASYMMETRICAL HOLES	REQUIRES RIM TAPE	RIM FINISHING	NUMBER OF SPOKES	DYNAMIC BALANCE	SPOKES MATERIAL	SPOKE TYPE	DIFFERENTIAL SPOKES R/L	ULTRALINEAR™ /DRSC™ GEOMETRY	NUT/NIPPLE MATERIAL	O.L.D. (mm)	HUB BODY MATERIAL	CUPS & CONES BEARINGS	BEARINGS VERSION	HUB FINISHING	SPOKE ANTI-ROTATION SYSTEM	COMPATIBILITY
---------------------	--------------	--	------------	--------------------	-------------------	---------------	------------------	-----------------	-----------------	------------	-------------------------	------------------------------	---------------------	-------------	-------------------	-----------------------	------------------	---------------	----------------------------	---------------

ROAD

CARBON WHEELS

BORA™ ULTRA™ TT front tub.	975	carbon	D/20		B				carbon					130		•	C			9/10/11
BORA™ ULTRA™ 35 front tub.	480	carb	35/24,2		B/D		18	RDB	SS	AE DB		UL	alu	100	carb	•	C	blk/carb	•	9/10/11
BORA™ ULTRA™ 35 rear tub.	690	carb	35/24,2		B/D		21/G3™	RDB	SS	AE DB		UL	alu	130	carb	•	C	blk/carb	•	9/10/11
BORA™ ULTRA™ 35 rear tub. (HG)	690	carb	35/24,2		B/D		21/G3™	RDB	SS	AE DB		UL	alu	130	carb	•	C	blk/carb	•	9/10/11
BORA™ ULTRA™ 50 front tub.	520	carb	50/24,2		B/D		18	RDB	SS	AE DB		UL	alu	100	carb	•	C	carb	•	9/10/11
BORA™ ULTRA™ 50 rear tub.	695	carb	50/24,2		B/D		21/G3™	RDB	SS	AE DB		UL	alu	130	carb	•	C	blk/carb	•	9/10/11
BORA™ ULTRA™ 50 rear tub. (HG)	695	carb	50/24,2		B/D		21/G3™	RDB	SS	AE DB		UL	alu	130	carb	•	C	blk/carb	•	9/10/11
BORA™ ULTRA™ 80 front tub.	705	carb	80/20		B/D		16	RDB	SS	AE DB		UL	alu	100	carb	•	C	blk/carb	•	9/10/11
BORA™ ULTRA™ 80 rear tub.	815	carb	80/20		B/D		18/G3™	RDB	SS	AE DB		UL	alu	130	carb	•	C	blk/carb	•	9/10/11
BORA™ ULTRA™ 80 rear tub. (HG)	854	carb	80/20		B/D		18/G3™	RDB	SS	AE DB		UL	alu	130	carb	•	C	blk/carb	•	9/10/11
BORA™ ONE 35 front cl.	505	carb	35/24,2		B/D		18	RDB	SS	AE DB		UL	alu	100	alu	•	U	black	•	9/10/11
BORA™ ONE 35 rear cl.	710	carb	35/24,2		B/D		21/G3™	RDB	SS	AE DB		UL	alu	130	alu	•	U	black	•	9/10/11
BORA™ ONE 35 rear cl. (HG)	710	carb	35/24,2		B/D		21/G3™	RDB	SS	AE DB		UL	alu	130	alu	•	U	black	•	9/10/11
BORA™ ONE 50 front tub.	545	carb	50/24,2		B/D		18	RDB	SS	AE DB		UL	alu	100	alu	•	U	black	•	9/10/11
BORA™ ONE 50 rear tub.	720	carb	50/24,2		B/D		21/G3™	RDB	SS	AE DB		UL	alu	130	alu	•	U	black	•	9/10/11
BORA™ ONE 50 rear tub. (HG)	720	carb	50/24,2		B/D		21/G3™	RDB	SS	AE DB		UL	alu	130	alu	•	U	black	•	9/10/11
BORA™ ULTRA™ 35 front cl.	575	carb	35/24,2		B/D		18	RDB	SS	AE DB		UL	alu	100	carb	•	C	blk/carb	•	9/10/11
BORA™ ULTRA™ 35 rear cl.	785	carb	35/24,2		B/D		21/G3™	RDB	SS	AE DB		UL	alu	130	carb	•	C	blk/carb	•	9/10/11
BORA™ ULTRA™ 35 rear cl. (HG)	785	carb	35/24,2		B/D		21/G3™	RDB	SS	AE DB		UL	alu	130	carb	•	C	blk/carb	•	9/10/11
BORA™ ULTRA™ 50 front cl.	630	carb	50/24,2		B/D		18	RDB	SS	AE DB		UL	alu	100	carb	•	C	carb	•	9/10/11
BORA™ ULTRA™ 50 rear cl.	805	carb	50/24,2		B/D		21/G3™	RDB	SS	AE DB		UL	alu	130	carb	•	C	blk/carb	•	9/10/11
BORA™ ULTRA™ 50 rear cl. (HG)	805	carb	50/24,2		B/D		21/G3™	RDB	SS	AE DB		UL	alu	130	carb	•	C	blk/carb	•	9/10/11
BORA™ ONE 35 front cl.	600	carb	35/24,2		B/D		18	RDB	SS	AE DB		UL	alu	100	alu	•	U	black	•	9/10/11
BORA™ ONE 35 rear cl.	805	carb	35/24,2		B/D		21/G3™	RDB	SS	AE DB		UL	alu	130	alu	•	U	black	•	9/10/11
BORA™ ONE 35 rear cl. (HG)	805	carb	35/24,2		B/D		21/G3™	RDB	SS	AE DB		UL	alu	130	alu	•	U	black	•	9/10/11
BORA™ ONE 50 front cl.	655	carb	50/24,2		B/D		18	RDB	SS	AE DB		UL	alu	100	alu	•	U	black	•	9/10/11
BORA™ ONE 50 rear cl.	830	carb	50/24,2		B/D		21/G3™	RDB	SS	AE DB		UL	alu	130	alu	•	U	black	•	9/10/11
BORA™ ONE 50 rear cl. (HG)	830	carb	50/24,2		B/D		21/G3™	RDB	SS	AE DB		UL	alu	130	alu	•	U	black	•	9/10/11
HYPERON™ ULTRA™ Two front cl.	580	carb	19/20		B	•	22	RDB	SS	AE DB		UL	alu	100	carb	•	C	carb	•	9/10/11
HYPERON™ ULTRA™ Two rear cl.	765	carb	21/20		B	•	24	RDB	SS	AE DB	•	UL	alu	130	carb	•	C	blk/carb	•	9/10/11
HYPERON™ ULTRA™ Two rear cl. (HG)	804	carb	21/20		B	•	24	RDB	SS	AE DB	•	UL	alu	130	carb	•	C	blk/carb	•	9/10/11
HYPERON™ ULTRA™ Two front tub.	536	carb	19/20		B		22	RDB	SS	AE DB		UL	alu	100	carb	•	C	carb	•	9/10/11
HYPERON™ ULTRA™ Two rear tub.	695	carb	21/20		B		24	RDB	SS	AE DB	•	UL	alu	130	carb	•	C	blk/carb	•	9/10/11
HYPERON™ ULTRA™ Two rear tub. (HG)	734	carb	21/20		B		24	RDB	SS	AE DB	•	UL	alu	130	carb	•	C	blk/carb	•	9/10/11

KEY

DB=Butted - AE=Aero - UAE=Ultra Aero - SS=Stainless steel - BR=Brass - S=steel - U=USB™ - C=CULT™ - SDB=Spoke Dynamic Balance - RDB=Rim Dynamic Balance
B=Bright - D=Dark

* Average weight - does not include the quick-release and the rim-tape.

WHEELS TECHNICAL SPECIFICATIONS

NOMINAL WEIGHT (g)*	RIM MATERIAL	RIM SECTION: HEIGHT/WIDTH - mm	ULTRA-FIT™	LABELS	REQUIRES RIM TAPE	RIM FINISHING	NUMBER OF SPOKES	DYNAMIC BALANCE	SPOKES MATERIAL	SPOKE TYPE	DIFFERENTIAL SPOKES R/L	ULTRALINEAR™ /DRSC™	NUT/NIPPLE MATERIAL	O.L.D. (mm)	HUB BODY MATERIAL	CUPS & CONES BEARINGS	BEARINGS VERSION	HUB FINISHING	SPOKE ANTI-ROTATION SYSTEM	COMPATIBILITY
---------------------	--------------	--------------------------------	------------	--------	-------------------	---------------	------------------	-----------------	-----------------	------------	-------------------------	---------------------	---------------------	-------------	-------------------	-----------------------	------------------	---------------	----------------------------	---------------

ROAD

ALUMINIUM - CARBON WHEELS

BULLET™ ULTRA™ front cl.	727	alu/carb	50/20,5		B/D	carb	18	RDB	SS	AE DB		DRSC™	alu	100	alu	•	U/C	black	•	
BULLET™ ULTRA™ rear cl.	863	alu/carb	50/20,5		B/D	carb	21/G3™	RDB	SS	AE DB		DRSC™	alu	130	alu	•	U/C	black	•	9/10/11
BULLET™ ULTRA™ rear cl. (HG)	902	alu/carb	50/20,5		B/D	carb	21/G3™	RDB	SS	AE DB		DRSC™	alu	130	alu	•	U/C	black	•	9/10/11
BULLET™ ULTRA™ 80mm front cl.	815	alu/carb	80/20,5		B/D	carb	16	RDB	SS	AE DB		DRSC™	alu	100	alu	•	U/C	black	•	
BULLET™ ULTRA™ 80mm rear cl.	955	alu/carb	80/20,5		B/D	carb	18/G3™	RDB	SS	AE DB		DRSC™	alu	130	alu	•	U/C	black	•	9/10/11
BULLET™ ULTRA™ 80mm rear cl. (HG)	994	alu/carb	80/20,5		B/D	carb	18/G3™	RDB	SS	AE DB		DRSC™	alu	130	alu	•	U/C	black	•	9/10/11
BULLET™ front cl.	785	alu/carb	50/20,5		B	carb	18	RDB	SS	AE DB		DRSC™	BR	100	alu		S	black	•	
BULLET™ rear cl.	970	alu/carb	50/20,5		B	carb	21/G3™	RDB	SS	AE DB		DRSC™	BR	130	alu		S	black	•	9/10/11
BULLET™ rear cl. (HG)	1009	alu/carb	50/20,5		B	carb	21/G3™	RDB	SS	AE DB		DRSC™	BR	130	alu		S	black	•	9/10/11
BULLET™ 80mm front cl.	865	alu/carb	80/20,5		B	carb	16	RDB	SS	AE DB		DRSC™	BR	100	alu		S	black	•	
BULLET™ 80mm rear cl.	1065	alu/carb	80/20,5		B	carb	18/G3™	RDB	SS	AE DB		DRSC™	BR	130	alu		S	black	•	9/10/11
BULLET™ 80mm rear cl. (HG)	1104	alu/carb	80/20,5		B	carb	18/G3™	RDB	SS	AE DB		DRSC™	BR	130	alu		S	black	•	9/10/11

KEY

DB=Butted - AE=Aero - UAE=Ultra Aero - SS=Stainless steel - BR=Brass - S=steel - U=USB™ - C=CULT™ - SDB=Spoke Dynamic Balance - RDB=Rim Dynamic Balance
B=Bright - D=Dark

* Average weight - does not include the quick-release and the rim-tape.

WHEELS TECHNICAL SPECIFICATIONS

	NOMINAL WEIGHT (g)*	RIM MATERIAL	RIM SECTION: HEIGHT/WIDTH - mm (NOMINAL)	ULTRA-FIT™	LABELS	REQUIRES RIM TAPE	RIM FINISHING	NUMBER OF SPOKES	DYNAMIC BALANCE	SPOKES MATERIAL	SPOKE TYPE	DIFFERENTIAL SPOKES R/L	ULTRALINEAR™ /DRSC™ GEOMETRY	NUT/NIPPLE MATERIAL	O.L.D. (mm)	HUB BODY MATERIAL	CUPS & CONES BEARINGS	BEARINGS VERSION	HUB FINISHING	SPOKE ANTI-ROTATION SYSTEM	COMPATIBILITY
--	---------------------	--------------	--	------------	--------	-------------------	---------------	------------------	-----------------	-----------------	------------	-------------------------	------------------------------	---------------------	-------------	-------------------	-----------------------	------------------	---------------	----------------------------	---------------

ROAD

ALUMINIUM WHEELS

SHAMAL™ MILLE™ front cl.	615	alu	23/20,5		B/D		black	16	RDB	alu	AE DB		UL	alu	100	alu/carb	•	U	blk/carb	•	9/10/11
SHAMAL™ MILLE™ rear cl.	811	alu	27/20,5		B/D		black	21/MG3™	RDB	alu	AE DB		UL	alu	130	alu/carb	•	U	blk/carb	•	9/10/11
SHAMAL™ MILLE™ rear cl. (HG)	811	alu	27/20,5		B/D		black	21/MG3™	RDB	alu	AE DB		UL	alu	130	alu/carb	•	U	blk/carb	•	9/10/11
SHAMAL™ ULTRA™ front cl.	605	alu	24/20,5		B/D		black	16	RDB	alu	AE DB		UL	alu	100	alu/carb	•	U	blk/carb	•	9/10/11
SHAMAL™ ULTRA™ rear cl.	820	alu	30/20,5		B/D		black	21/MG3™	RDB	alu	AE DB		UL	alu	130	alu/carb	•	U	blk/carb	•	9/10/11
SHAMAL™ ULTRA™ rear cl. (HG)	859	alu	30/20,5		B/D		black	21/MG3™	RDB	alu	AE DB		UL	alu	130	alu/carb	•	U	blk/carb	•	9/10/11
SHAMAL™ ULTRA™ front tub.	612	alu	24,5/20		B		black	16	RDB	alu	AE DB		UL	alu	100	alu/carb	•	U	blk/carb	•	9/10/11
SHAMAL™ ULTRA™ rear tub.	813	alu	28,5/20		B		black	21/MG3™	RDB	alu	AE DB		UL	alu	130	alu/carb	•	U	blk/carb	•	9/10/11
SHAMAL™ ULTRA™ rear tub. (HG)	852	alu	28,5/20		B		black	21/MG3™	RDB	alu	AE DB		UL	alu	130	alu/carb	•	U	blk/carb	•	9/10/11
SHAMAL™ ULTRA™ 2-Way Fit™ front	615	alu	24/20,5	•	B		black	16	RDB	alu	AE DB		UL	alu	100	alu/carb	•	U	blk/carb	•	9/10/11
SHAMAL™ ULTRA™ 2-Way Fit™ rear	825	alu	28/20,5	•	B		black	21/MG3™	RDB	alu	AE DB		UL	alu	130	alu/carb	•	U	blk/carb	•	9/10/11
SHAMAL™ ULTRA™ 2-Way Fit™ rear (HG)	864	alu	28/20,5	•	B		black	21/MG3™	RDB	alu	AE DB		UL	alu	130	alu/carb	•	U	blk/carb	•	9/10/11
EURUS™ front cl.	640	alu	24/20,5		B		black	16	RDB	alu	AE DB		UL	alu	100	alu	•	S	slv/blk	•	9/10/11
EURUS™ rear cl.	825	alu	30/20,5		B		black	21/G3™	RDB	alu	AE DB		UL	alu	130	alu	•	S	slv/blk	•	9/10/11
EURUS™ rear cl. (HG)	864	alu	30/20,5		B		black	21/G3™	RDB	alu	AE DB		UL	alu	130	alu	•	S	slv/blk	•	9/10/11
EURUS™ 2-Way Fit™ front	645	alu	24/20,5	•	B		black	16	RDB	alu	AE DB		UL	alu	100	alu	•	S	black	•	9/10/11
EURUS™ 2-Way Fit™ rear	840	alu	28/20,5	•	B		black	21/MG3™	RDB	alu	AE DB		UL	alu	130	alu	•	S	black	•	9/10/11
EURUS™ 2-Way Fit™ rear (HG)	879	alu	28/20,5	•	B		black	21/MG3™	RDB	alu	AE DB		UL	alu	130	alu	•	S	black	•	9/10/11
ZONDA™ front cl.	670	alu	24/20,5		B		black	16	RDB	SS	AE DB		UL	BR	100	alu	•	S	black	•	9/10/11
ZONDA™ rear cl.	880	alu	30/20,5		B		black	21/G3™	RDB	SS	AE DB		UL	BR	130	alu	•	S	black	•	9/10/11
ZONDA™ rear cl. (HG)	924	alu	30/20,5		B		black	21/G3™	RDB	SS	AE DB		UL	BR	130	alu	•	S	black	•	9/10/11
ZONDA™ 2-Way Fit™ front	680	alu	24/20,5	•	B		black	16	RDB	SS	AE DB		UL	BR	100	alu	•	S	black	•	9/10/11
ZONDA™ 2-Way Fit™ rear	890	alu	30/20,5	•	B		black	21/G3™	RDB	SS	AE DB		UL	BR	130	alu	•	S	black	•	9/10/11
ZONDA™ 2-Way Fit™ rear (HG)	939	alu	30/20,5	•	B		black	21/G3™	RDB	SS	AE DB		UL	BR	130	alu	•	S	black	•	9/10/11
SCIROCCO™ 35mm front cl.	788	alu	35/20		B		black	16	RDB	SS	AE DB			alu	100	alu		S	black	•	9/10/11
SCIROCCO™ 35mm rear cl.	937	alu	35/20		B		black	21/MG3™	RDB	SS	AE DB			alu	130	alu		S	black	•	9/10/11
SCIROCCO™ 35mm rear cl. (HG)	1004	alu	35/20		B		black	21/MG3™	RDB	SS	AE DB			alu	130	alu		S	black	•	9/10/11
VENTO™ ASYMMETRIC front cl.	750	alu	24/20,5		B	•	black	18		SS	AE DB			alu	100	alu		S	black		9/10/11
VENTO™ ASYMMETRIC G3™ rear cl.	910	alu	27,5/20,5		B	•	black	24/G3™		SS	AE DB			alu	130	alu		S	black		9/10/11
VENTO™ ASYMMETRIC G3™ rear cl. (HG)	949	alu	27,5/20,5		B	•	black	24/G3™		SS	AE DB			alu	130	alu		S	black		9/10/11
KHAMSIN™ ASYMMETRIC front cl.	815	alu	24/20,5		B	•	black	18		S				BR	100	alu		S	black		9/10/11
KHAMSIN™ ASYMMETRIC rear cl.	935	alu	27,5/20,5		B	•	black	20		S/SS				BR	130	alu		S	black		9/10/11
KHAMSIN™ ASYMMETRIC rear cl. (HG)	974	alu	27,5/20,5		B	•	black	20		S/SS				BR	130	alu		S	black		9/10/11
KHAMSIN™ ASYMMETRIC front cl.	815	alu	24/20,5		B	•	black	18		S				BR	100	alu		S	black		9/10/11
KHAMSIN™ ASYMMETRIC G3™ rear cl.	975	alu	27,5/20,5		B	•	black	24/G3™		S/SS				BR	130	alu		S	black		9/10/11
KHAMSIN™ ASYMMETRIC G3™ rear cl. (HG)	1014	alu	27,5/20,5		B	•	black	24/G3™		S/SS				BR	130	alu		S	black		9/10/11
NEUTRON™ ULTRA™ front cl.	630	alu	18/20,5		B	•	black	22		SS	AE DB	•	UL	alu	100	alu/carb	•	S	blk/carb		9/10/11
NEUTRON™ ULTRA™ rear cl.	840	alu	18/20,5		B	•	black	24		SS	AE DB	•	UL	alu	130	alu/carb	•	S	blk/carb		9/10/11
NEUTRON™ ULTRA™ rear cl. (HG)	879	alu	18/20,5		B	•	black	24		SS	AE DB	•	UL	alu	130	alu/carb	•	S	blk/carb		9/10/11

KEY

DB=Butted - AE=Aero - UAE=Ultra Aero - SS=Stainless steel - BR=Brass - S=steel - U=USB™ - C=CULT™ - SDB=Spoke Dynamic Balance - RDB=Rim Dynamic Balance
B=Bright - D=Dark

* Average weight - does not include the quick-release and the rim-tape.

WHEELS TECHNICAL SPECIFICATIONS

	NOMINAL WEIGHT (g)*	RIM MATERIAL	RIM SECTION: HEIGHT/WIDTH - mm (NOMINAL)	ULTRA-FIT™	LABELS	REQUIRES RIM TAPE	RIM FINISHING	NUMBER OF SPOKES	DYNAMIC BALANCE	SPOKES MATERIAL	SPOKE TYPE	DIFFERENTIAL SPOKES R/L	ULTRALINEAR™ /DRSC™	NUT/NIPPLE MATERIAL	O.L.D. (mm)	HUB BODY MATERIAL	CUPS & CONES BEARINGS	BEARINGS VERSION	HUB FINISHING	SPOKE ANTI-ROTATION SYSTEM	COMPATIBILITY
--	---------------------	--------------	--	------------	--------	-------------------	---------------	------------------	-----------------	-----------------	------------	-------------------------	---------------------	---------------------	-------------	-------------------	-----------------------	------------------	---------------	----------------------------	---------------

TRIATHLON - TIME TRIAL

BORA™ ULTRA™ TT rear road	975	carbon	D/20		B					carbon					130		•	C			9/10/11
---------------------------	-----	--------	------	--	---	--	--	--	--	--------	--	--	--	--	-----	--	---	---	--	--	---------

CYCLOCROSS

KHAMSIN™ ASYMMETRIC CX front cl.	815	alu	24/20,5		B	•	black	18		S				BR	100	alu		S	black		
KHAMSIN™ ASYMMETRIC CX rear cl.	935	alu	27,5/20,5		B	•	black	20		S/SS				BR	130	alu		S	black		9/10/11
KHAMSIN™ ASYMMETRIC CX rear cl. (HG)	974	alu	27,5/20,5		B	•	black	20		S/SS				BR	130	alu		S	black		9/10/11
SCIROCCO™ 35mm CX front cl.	778	alu	24/20,5		B	•	black	20		SDB	SS	AE DB		alu	100	alu		S	black	•	
SCIROCCO™ 35mm CX rear cl.	937	alu	24/20,5		B	•	black	27/G3™		SDB	SS	AE DB		alu	130	alu		S	black	•	9/10/11
SCIROCCO™ 35mm CX rear cl. (HG)	1004	alu	24/20,5		B	•	black	27/G3™		SDB	SS	AE DB		alu	130	alu		S	black	•	9/10/11

PISTA

GHIBLI™ front track	955	alu	D/19							aramid					100	alu		•	S		
GHIBLI™ rear track	995	alu	D/19							aramid					120	alu		•	S		
PISTA™ front tub.	995	alu	38/20		B		black	20		SS	AE			alu	100	alu		•	S	black	
PISTA™ rear tub.	1040	alu	38/20		B		black	24		SS				alu	120	alu		•	S	black	

KEY

DB=Butted - AE=Aero - UAE=Ultra Aero - SS=Stainless steel - BR=Brass - S=steel - U=USB™ - C=CULT™ - SDB=Spoke Dynamic Balance - RDB=Rim Dynamic Balance
B=Bright - D=Dark

* Average weight - does not include the quick-release and the rim-tape.

The Service Center is the reference point for all Campagnolo® dealers and its aim is to provide an adequate after-sales service to Campagnolo® users. Service Centers are a territorial extension of Campagnolo srl and work exclusively with dealers, no exceptions made. The Service Centers handle two activities: After-sales Service and Spare Parts Service.

The After-sales Service provides technical assistance for products under guarantee or otherwise, enabling cyclists to enjoy the first-class characteristics of Campagnolo® products for long, without forfeiting safety, performance and endurance.

The Spare Parts Service handles the distribution of spare parts. Campagnolo® possesses a large inventory of spare parts and is able to replenish its distribution system adequately in relatively short times.

We therefore advise you to refer to your Campagnolo® dealer for any expert action required by your bikes - these dealers are the only ones supported by the constant, skilled collaboration of Campagnolo® Service Centers.

TECHNICAL INFORMATION

ITALY (CENTRAL)

Tel. +39-0444-225600
Fax: +39-0444-225400

FRANCE

Tel. +33-477-554449
Fax: +33-477-556345

GERMANY

Tel. +49-214-206953-20
Fax: +49-214-206953-15

SPAIN

Tel. +34-945-217195
Fax: +34-945-217198

U.S.A.

Tel. +1-760-9310106
Fax: +1-760-9310991

JAPAN

Tel. +81-45-264-2780
Fax: +81-45-241-8030

SERVICE CENTERS

ITALY - CENTRAL SERVICE CENTER

CAMPAGNOLO SRL HEADQUARTERS
Via della Chimica, 4 - 36100 VICENZA
Tel. +39-0444-225600
Fax: +39-0444-225606
E-mail: service.campagnolo@campagnolo.com

AUSTRALIA

DE GRANDI CYCLE AND SPORTS
419 Moorabool Street 3220
GEELONG (VICTORIA)
Tel. +61 3 5221 5099
E-mail: shane@degrandi.com.au

BIKE SPORTZ IMPORTS

23C & 23D Industrial Drive
BRAESIDE 3195 (VICTORIA)
Tel. +61 3 95872344
E-mail: jnunan@bikesportz.com.au

AUSTRIA - GERMANY

CAMPAGNOLO DEUTSCHLAND GMBH
Alte Garten 62
51371 LEVERKUSEN
Tel. +49-214-206953-20
Fax: +49-214-206953-15

BENELUX

INTERNATIONAL CYCLE CONNECTION
B.V. - I.C.C.
Communicatielaan 5A
4538 BV TERNEUZEN NETHERLAND
Tel. +31 (0)115 649321
Fax: +31 (0)115 649110
E-mail: info@i-c-c.nl
Web: www.i-c-c.nl

BRAZIL

DIPSA-Distribuidora de Pecas e Acessorios Ltda.
Rua Barao do Rego Barros 510
CEP. 04512-041
São Paulo - SP - Brazil
Tel. (11) 5093-4364
E-mail: dipsa@dipsa.com.br

CANADA

CYCLES MARINONI INC
1067, Levis - LACHENAIE
QUEBEC J6W 4L2
Tel. +1-450-4717133
Fax: +1-450-4719887

CANADA

GREAT WESTERN BICYCLE
232 West 7th Ave
VANCOUVER, BC
V5Y 1M1
Tel. 1 604 872 2446
Fax: 1 604 872 0226

CHINA - HONG KONG

IRON ORE CO LTD
3/F, WING WAH INDUSTR.BUILDING
137-143 YEUNG UK ROAD
TSUEN WAN, NEW TERRITORIES
HONG KONG
Tel. +852 3576/3839
E-mail: ccheng@ironorechina.com

CHEUNG KEE CYCLE CO

Number 1b, Fuk Yip Building No. 12
Kik Yeung Road Yuen Long
N.T. HONG KONG
Tel. +85 224746794
E-mail: sales@ckcycle.com

CHILE

RAFAEL BURGOS S.A.
Arturo Prat, 1032
SANTIAGO
Tel. +56 2/5200600
Fax +56 2/6342390

CYPRUS

RACING CYCLES LTD
Prodromou 51
2063, Strovolos
Nicosia, Cyprus
tel: +357 22270766
fax: +357 22270437
email: cyprus@racingcycles.eu

CZECH REPUBLIC

SIRER s.r.o.
Vit. Halka 368
26601 BEROUN
Tel. 00420775590956
Fax: 00420608241691
E-mail: campagnolo@sirer.cz
Web: www.campagnolo-sirer.cz

DENMARK

PEAK BIKE APS
Svejsengangen 3-1 TH
2690 Karlslunde
DENMARK
Tel. +45-4492 2800
E-mail: info@peakbike@dk

FINLAND

VELOSPORT KY
Mäkelänkatu 95
00610 HELSINKI, FINLAND
FI Finlandia
Tel. +358 9795468
Fax +358 9795498

FRANCE

CAMPAGNOLO FRANCE SAS
ZA du Tissot
42530 ST GENEST - LERPT
Tel. +33-477-556305
Fax: +33-477-556345

GREECE

CYCLES FIDUSA - GIORGIO VOYATZIS & CO.
Th. Sofuli 97
85100 RHODOS
Tel. +30-2241 021264
Fax: +30-2241 021519

ACTIVE ZONE NETWORK S.A.

Varis-Koropiu & Makedonias, 2
16672 VARI. ATHENS
Tel. +30-210/9612929
E-mail: info@cyclist.gr

RACING CYCLES GREECE LTD

Olympic Tennis Center
Amarysias Artemidos & Pittara
15123, Marousi
Attiki
Tel. +30 210 3312610
Email: sales@racingcycles.eu

ISRAEL

AMIT LEVINSON LTD
25 Sheshet Hayamim Str. - QIRYAT HAIM
POB 252 ZIP 26101
Tel. +972-4-8405649
Fax: +972-4-8423913

JAPAN

CAMPAGNOLO JAPAN LTD
65 Yoshida-cho, Naka-ku,
YOKOHAMA 231-0041 JAPAN
Tel. +81-45-264-2780
Fax: +81-45-241-8030

NEW ZEALAND

WH WORRALL CO. LTD.
43 Felix St./Penrose - P.O. Box 12481
AUCKLAND
Tel. +64-9-6360641
Fax: +64-9-6360631

POLAND

P.H.U. WERTYKAL S.C.
UL. RODZINY POGANOW 76
32-080 ZABIERZOW
Tel. +48/12/346 16 69
+ 48/604/07 70 94
E-mail: serwis@wertykal.com
Web: www.wertykal.com

SINGAPORE - MALAYSIA - INDONESIA

TRIMEN VENTURES PTE LTD
31 BUKIT BATOK CRESCENT #01-13
WCEGA PLAZA 658070
SINGAPORE
Tel. +65-67476448
Fax: +65-67476447

KIAN HONG CYCLE PTE LTD

13 KAKI BUKIT ROAD 1
#02-08 EUNOS TECHNOLINK
SINGAPORE 415928
Tel. +65 67495787
E-mail: smiek@khcycle.com.sg

SPAIN

CAMPAGNOLO IBERICA S.L.
Avda. de Los Huetos 46 Pab. 31
01010 VITORIA
Tel. +34-945-217195
Fax: +34-945-217198

SLOVAC REPUBLIC

ZANZO S.R.O.
Kysucky Lieskovec 421
02334 BRATISLAVA
Tel. 00421 245 523721
Fax: 00421 245 249404

SLOVENIA

MAXISPORT D.O.O.
Smartinska cesta 211
1000 LJUBLJANA
Tel. +386 1 541 10 60
Fax: +386 1 541 67 61
E-mail: service@maxisport.si
Web: www.maxisport.si

SOUTH AFRICA

CYCLING J&J (PTY) LTD.
169 Meerlust Street -
Willow Glen PRETORIA
Tel. +27-012-8075570
Fax: +27-012-8074267

SOUTH KOREA

DAEJIN INTERNATIONAL
977-6, DAEJAM-DONG
NAM-GU POHANG
KYOUNGSANGBUK-DO
Tel. +82 54/275.2216
E-mail: info.bianchi@yahoo.co.kr

DONGJIN IMPORTS CO LTD

560-5 Banghak-Dong Dobong-Gu SEOUL
Tel. +82 2/4997053
E-mail: kenney.dongjin@gmail.com

SWITZERLAND

SWISSBIKE PIERO ZURINO GMBH
Pilatusstr. 4 - 6036 DIERIKON
Tel. +41-41-7485550
Fax: +41-41-7485551

U.G.D. SPORT DIFFUSION S.A.

La Taille - 2053 CERNIER
Tel. +41-32-8536363
Fax: +41-32-8536464
info@ugd.ch

TAIWAN, MAINLAND CHINA

COLMAX INTERNATIONAL LTD
TAIWAN BRANCH (H.K.)
No.70, TAIYI RD., RENDE DIST.
TAINAN CITY
TAIWAN
Tel. +886-6-265 6001
Fax: +886-6-265 1388
E-mail: charis@colmax.com.tw
Web: www.colmax.com.tw

THAILAND

UWC Ltd. (TCA) - Service center Bangkok
777/5, Mue 5, TIP 6, T.Bangpla
A.Bangplee, Samutprakarn 10540
Thailand
Tel : +66 217 07904
Fax : +66 217 07905
www.tcabicycle.com

UWC/TCA Service Center - Chiang Mai

44/1 Devarit Rd., T.Changpurk
A.Muang, Chiang Mai 50300
Tel : +66 53 406 292
Fax : +66 53 406 295

UWC/TCA Service Center - Hat Yai

1899/23 Panpruksa, Sanambin-Lopburiramet
Rd., T. Kuanlang
A. Hat Yai, Songkla 90110
Tel : +66 74 536 456
Fax : +66 74 800 463

UNITED KINGDOM

CHICKEN CYCLEKIT
Unit b2, Cherrycourt Way
LU7 4UH BEDFORDSHIRE
Tel. +44 1525 381347
Fax: +44 1525 385361
E-mail: sales@chickencyclekit.co.uk

UNITED KINGDOM

CYCLESPOORT NORTH LTD
Unit 363 LEACH PLACE
WALTON SUMMIT CENTRE
BAMBER BRIDGE - PRESTON
LANCASHIRE
Tel. +44 (0) 1772 339220
Fax: +44 (0) 1772 339290
E-mail: sales@cyclesportnorth.co.uk
Web: www.csnb2b.co.uk

VELOTECH CYCLING LTD

37 Dingleberry Olney Bucks
MK46 5ES BUCKINGHAMSHIRE
Tel. +44 7533 129435
velotechcycling@aim.com

I-RIDE

7-8B Mid Sussex Business Park
Ditchling Common Ind. Est.
Folder Lane East
Ditchling, Sussex
BN6 8SE
Tel. +44 (0) 1444 243000
Fax: +44 (0) 1444 239215
E-mail: service@i-ride.co.uk
info@i-ride.co.uk

UNITED STATES

CAMPAGNOLO NORTH AMERICA INC.
5431 Avenida Encinas, Suite C
CARLSBAD CA 92008
Tel. +1-760-9310106
Fax: +1-760-9310991

OCHSNER INTERNATIONAL INC

246 E. Marquardt Drive - WHEELING
IL. 60090-6430
Tel. +1-847-4658200
Fax: +1-847-4658282

QUALITY BICYCLE PRODUCTS

6400 W. 105th Street
BLOOMINGTON, MN 55438-2554
Tel. +1-952-9419391
Fax: +1-952-9419799

THE HAWLEY COMPANY, INC.

1181 South Lake Drive
LEXINGTON, SC 29073-7744
Tel. +1-803.359.3492 x 192
Fax: +1-803.359.1343

HEADQUARTERS BRANCH OFFICES

CAMPAGNOLO S.R.L.

Via della Chimica, 4
36100 Vicenza - ITALY
Tel. +39-0444-225500
Fax: +39-0444-225400
E-mail: sales@campagnolo.com

FRANCE

CAMPAGNOLO FRANCE SASU
ZA du Tissot
42530 St GENEST - LERPT
Tel. +33-477-556305
Fax: +33-477-556345
E-mail: campagnolo@campagnolo.fr

GERMANY

CAMPAGNOLO
DEUTSCHLAND GMBH
Alte Garten 62
51371 LEVERKUSEN
Tel. +49-214-206953-0
Fax: +49-214-206953-15
E-mail: campagnolo@campagnolo.de

JAPAN

CAMPAGNOLO JAPAN LTD
65 Yoshida-cho, Naka-ku,
YOKOHAMA
231-0041
Tel. +81-45-264-2780
Tel. +81-45-241-8030
E-mail: info@campagnolo.jp

SPAIN

CAMPAGNOLO IBERICA S.L.
Avda. de Los Huetos 46. pab. 31
01010 VITORIA
Tel. +34-945-217195
Fax: +34-945-217198
E-mail: campagnolo@campagnolo.es

TAIWAN

PRIMATEK LTD
No. 1, Gongyequ 37th Rd.,
Xitun Dist.,
Taichung City 407, Taiwan R.O.C.
Tel. +886-4-23506831
Fax: +886-4-23596764

UNITED STATES

CAMPAGNOLO NORTH
AMERICA INC.
5431 Avenida Encinas, Suite C -
CARLSBAD CA 92008 - U.S.A.
Tel. +1-760-9310106
Fax: +1-760-9310991
E-mail: info@campagnolona.com

SALES NETWORK

ARGENTINA

ANGEL DIAZ
Av. Mosconi 2255
BUENOS AIRES
E-mail: info@rodadosdiaz.com.ar
Tel. +54 1145716481

AUSTRALIA

DE GRANDI CYCLE AND SPORTS
419 Moorabool Street 3220
GEELONG (VICTORIA)
Tel. +61 3 5221 5099
E-mail: shane@degrandi.com.au

BIKE SPORTZ IMPORTS

23C & 23D Industrial Drive
BRAESIDE 3195 (VICTORIA)
Tel. +61 3 95872344
E-mail: jnunan@bikesportz.com.au

AUSTRIA

NSPORTS
HANDELSAGENTUR
ALEXANDER NIEDERSTETTER
Goethestraße 8
6845 Hohenems VORARLBERG
Tel. +43 5576 74015
Fax: +43 5576 74153
E-mail: alexander@nsports.at
Web: www.nsports.at

BELGIUM

BIKES & PARTS ROLAND VERVAET
Klipsenstraat 24 9160 - LOKEREN
Tel. 0032 (0) 93493836
Fax: 0032 (0) 93485148
Web: www.bikes-parts.be

MINERVA N.V.

Schoebroekstraat 38
B-3583 PAAL-BERINGEN
Tel. +32 11/45.76.70
Fax +32 11/45.76.71
Web: www.minerva-nv.be

VDB PARTS N.V.

Industriepark Noord 24 A 9100 - SINT-NIKLAAS
Tel. 0032 (0) 37807130
Fax: 0032 (0) 37807144
Web: www.vdbparts.be

BRAZIL

DIPSA
Distribuidora de Pecas e Acessorios Ltda.
Rua Barao do Rego Barros 510
CEP. 04612-041
São Paulo - SP
Brazil
Tel. (55) (11) 5096-4364
Web: dipsa@dipsa.com.br
E-mail: dipsa@dipsa.com.br

CANADA

CYCLES LAMBERT
1000 rue des Riveurs, Lévis,
QUEBEC G6V 9G3
Tel. 418.835.5659
Fax: 418.835.5322

CANADA

GREAT WESTERN BICYCLE
232 West 7th Ave
VANCOUVER, BC
V5Y 1M1
Tel. 1 604 872 2446
Fax: 1 604 872 0226

MARINONI

1067 Levis
TERREBONNE, QC, Canada
J6W 4L2
Tel. 450.471.7133

CHILE

KEDRUK Y VIROVKO LTDA - KYV
CYCLING
Lo Beltran 1979 Vitacura - 7640541
SANTIAGO CILE
E-mail: info@kyvcycling.cl
Tel. +56 2/9866449

RAFAEL BURGOS S.A.

Arturo Prat, 1032
SANTIAGO
Tel. +56 2/5200600
Fax +56 2/6342390

CHINA - HONG KONG

BEIJING St.Rider Trading CO.,LTD.
A-6 rows of 6,Gao Bei Dian
NEW VILLAGE ,CHAO YANG District
Beijing,China
Tel:+86- 10 89035750
Fax:+86-10 89036165
E-mail: zhangjuzheng@striderchina.com

CHEUNG KEE CYCLE CO

Number 1b, Fuk Yip Building No. 12
Kik Yeung Road - Yuen Long N.T.
HONG KONG
Tel. +85 224746794
E-mail: sales@ckcycle.com

IRON ORE CO LTD

3/F, WING WAH INDUSTR. BUILDING
137-143 YEUNG UK ROAD
TSUEN WAN, NEW TERRITORIES
HONG KONG
Tel. +852 3576/3839
E-mail: ccheng@ironorechina.com

THE WING'S COMPANY

1b, Maple Court
222 Fa Yuen St. Mongkok Kowloon
HONG KONG
Tel. +852 23812635
E-mail: the_wings_co@hotmail.com

COLOMBIA

STRONG MAN
CALLE 68 NR. 29-42
BARRO 7 DE AGOSTO
BOGOTA
COLOMBIA

CYPRUS

RACING CYCLES LTD
Prodromou 51
2063, Strovolos
Nicosia, Cyprus
tel: +357 22270766
fax: +357 22270437
email: sales@racingcycles.eu

CZECH REPUBLIC

SIRER s.r.o.
Vit. Halka 368
26601 BEROUN
Tel. 00420775590956
Fax: 00420608241691
E-mail: campagnolo@sirer.cz
Web: www.campagnolo-sirer.cz

DENMARK

PEAKBIKE APS
Svejssegangen 3-1 Th 2690
KARLSLUNDE DENMARK
Tel. +45 4492 2800
E-mail: info@peakbike@dk

ESTONIA

DENARO TEAM
Männiku tee 96G
11316 TALLIN ESTONIA
Tel. +3725051209
E-mail: mihkel@e-bike.ee

FRANCE

CAMPAGNOLO FRANCE
ZA du tissot
42530 SAINT GENEST LERPT
Tel. +33 477 556305
Fax : +33 477 556345

GERMANY

ASTRO Rad + Teile + Zubehör
Angerstraße 4
96231 BAD STAFFELSTEIN
Tel. +49 9573 96030
E-mail: info@astro-rad.de
Web: http://www.astro-rad.de

CCM-Sport GmbH

Von-Wrangell-Str. 5
53359 RHEINBACH
Tel. +49 2226 9065-0
E-mail: ccm-sport@t-online.de Web:
www.ccm-sport.de

DIEGELMANN & JACOBI GmbH

In den Nassen 4
65719 HOFHEIM AM TAUNUS
Tel. +49 6192 206146
Web: www.diegelmannshop.de

HERMANN HARTJE KG

Deichstraße 120 - 122
273 18 HOYA
Tel. +49 4251 811-20
E-mail: info@hartje.de
Web: www.hartje.de

RA-CO GmbH

Fichtenweg 37
99198 KERSPLEBEN
Tel. +49 36203 6140
E-mail: service@ra-co.de
Web: www.ra-co.de

GERMANY

RaiKo GmbH
Radsportgroßhandel
Feldstr. 7
53340 MECKENHEIM
Tel. +49 2225/706710
E-mail: info@raiko.de
email: sales@racingcycles.eu

ENGELBERT WIENER BIKE Parts

GmbH
Max-Planck-Str. 8
97526 SENNFELD
BAYERN
Tel. +49 9721 65010
E-mail: info@bike-parts.de
Web: www.bike-parts.de

GREECE

ACTIVE ZONE NETWORK S.A.
Varis-Koropiou & Makedonias, 2 16672
Vari.
ATHENS GREECE
Tel. +30 210/9612929
E-mail: info@cyclist.gr

CYCLES FIDUSA

Th. Sofuli 97 85100
RHODOS GREECE
Tel. +30 2241021264
E-mail: fidusagv@otenet.gr

RACING CYCLES LTD

002 OAKA - TENNIS OLYMPIC
CENTER
38 ATHALASSIS AVENUE, OFF.101
STROVOLOS - NICOSIA
CYPRUS

ISRAEL

AMIT LEVINSON LTD
25 Sheshet Hayamim Str. Qiryat Haim
Pob 252
ZIP 26101 ISRAEL
Tel. +972 3 5612520
E-mail: info@amitbike.co.il

ITALY

For information on the distribution
network
in Italy please contact
Campagnolo S.r.l. headquarters

JAPAN

NICHINAO SHOKAI
221 Shinzen-cho, Sakai-ku, Soka
SAITAMA, 340-0054
Tel. +81-48-953-9771
Fax. +81-48-953-9774
E-mail: info@nichinao.co.jp

KAWASHIMA CYCLE SUPPLY

3-3-16 Kitasho-cho, Sakai-ku, Sakai
OSAKA 590-0007 JAPAN
Tel. +81-72-238-6126
Fax: +81-72-221-4379
E-mail: info@riogrande.co.jp

AGENT NETWORK

BENELUX

INTERNATIONAL
CYCLE CONNECTION I.C.C.
Communicatelaan 5A
4538 BV TERNEUZEN
NETHERLAND
Tel. + 31 (0)115 649321
Fax: + 31 (0)115 649110
E-mail: info@i-c-c.nl
Web: www.i-c-c.nl

UNITED KINGDOM

SELECT CYCLE
COMPONENTS
The White House
Main Street
NEWTON NI13 8HN -
ENGLAND
Tel. +44-0780260628
E-mail: rosafio@selectcyclecomponents.com

JAPAN

DINOSAUR
2-8-15 Kitanoshonishi-machi, Nara-shi
NARA, 630-8452 JAPAN
Tel. +81-742-64-3555
Tel. +81-742-64-3556
E-mail: info@dinosaur-gr.com

YOKOHAMA SANNOW SPORTS

242-1 Higashikibougaoka, Asahi-ku
YOKOHAMA, 241-0826 JAPAN
Tel. +81-45-364-3792
Fax: +81-45-362-7916
E-mail: info@sannowsports.jp

NETHERLAND

JUNCKER BIKE PARTS
Fokkerstraat 25
3905 KV - VEENENDAAL
Tel. 0031 (0) 318553030
Fax: 0031 (0) 318552111
Web: www.jucnker.nl

HANDELSONDERNEMING TEHAVA

B.V.
Tomeikerweg 31
6161 RB - GELEEN
Tel. 0031 (0) 464752100
Fax: 0031 (0) 464750424
Web: www.tehava.com

NEW ZEALAND

DE GRANDI CYCLE & SPORTS NZ
LTD
19 Nuttall Drive 8022
HILLSBOROUGH-CRISTCHURCH
NEW ZEALAND
Tel. +64 33891205
E-mail: jonny@degrandi.co.nz

W.H.WORRALL & CO. LTD.

43 Felix Street Penrose PO box 12481
Auckland New Zealand
Tel. +64 96360641
E-mail: David@worrall.co.nz

NORWAY

RACING DEPOT A/S
GRAVARSVIEIEN, 36
SANDNES
Tel. +47 51686270
E-mail: morten.forus@racingdepot.no

PHILIPPINES

YKK Trading
68-74 Legaspi Street
CEBU CITY 6000 PHILIPPINES
Tel. +636332.2558853
E-mail: johngm@ykkbikes.com

SINGAPORE - INDONESIA

KIAN HONG CYCLE PTE LTD
13 KAKI BUKIT ROAD 1
#02-08 EUNOS TECHNOLINK
SINGAPORE 415928
Tel. +65 67495787
E-mail: smiek@khcycle.com.sg

SINGAPORE - INDONESIA

TRIMEN VENTURES PTE LTD
31 BUKIT BATOK CRESENT #01-13
WCEGA PLAZA 658070
SINGAPORE
Tel. +65 67476448
E-mail: bryan.chew@pacific.net.sg

SLOVENIA

MAXISPORT d.o.o. Letaliaka c.5 1000
Ljubljana-SLOVENIJA
Tel. +386 1 547 65 00
E-mail: service@maxisport.si

SOUTH AFRICA

RIBBENS INTERNATIONAL CC
169 Meerlust Street - Willow Glen
PRETORIA SOUTH AFRICA
Tel. +27 0128075570
E-mail: jr@jjcycling.co.za

SOUTH KOREA

DAEJIN INTERNATIONAL
15 HYOSEONG-RO, NAM-GU
POHANG-SI
GYEONGSANGBUK-DO
SOUTH KOREA
Tel. +82 54/275.2216
E-mail: info.bianchi@yahoo.co.kr

DONGJIN IMPORTS CO LTD

560-5 Banghak-Dong Dobong-Gu
SEOUL SOUTH KOREA
Tel. +82 2/4997053
E-mail: kenney.dongjin@gmail.com

SPAIN

COMET DISTRIBUCIONES
COMERCIALES SL
POLIGONO ERRATZU, 440
APDO.191 - URNIETA (GUIPUZCOA)
Tel. +34-943 330 965
Fax: +34-555 658
E-mail: comet@comet.es

JAIME LLORENTE S.L.DIST.CICLISTAS

CAPTAN BLANCO ARGIBAY, 139
MADRID
Tel. +34-91 315 3496
Fax: +34- 91 3230652
E-mail: info@jaimellorete.com

CASA MASFERRER, S.A.

POL.IND.CONGOST AVDA. S.JULIAN
GRANOLLERS (BARCELONA)
Tel. +34-93 8463 444
Fax: +34-93 846 5355
E-mail: masferrer@casamasferrer.com

SWITZERLAND

GPR AG
Neugrütstraße 4 b - 8610 USTER
Tel. 0041 44 9449393
E-mail: info@gprag.ch
Website: www.gprag.ch

SWISSBIKE PIERO ZURINO GmbH

Pilatusstrasse 4
6063 DIERIKON SWITZERLAND
Tel. +41 41 748 55 50
E-mail: parts@swissbike.net
Web: www.swissbike.net

SWITZERLAND

UGD SPORT DIFFUSION SA
La Taille
2053 CERNIER
Tel. 0041 032 8536363
E-mail: info@ugd.ch
Website: www.ugd.ch

TAIWAN - CHINA

COLMAX INTERNATIONAL LTD
TAIWAN BRANCH (H.K.)
No.70, TAIYI RD., RENDE DIST.
TAINAN CITY
TAIWAN
Tel. +886-6-265 6001
Fax: +886-6-265 1388
E-mail: charis@colmax.com.tw
Web: www.colmax.com.tw

THAILAND

UWC LTD
777/5 Moo.9 Krongkam Tip 6
BANGPLA, BANGPLEE
SAMUTPRAKAM
THAILAND
Tel. +66 23673470
E-mail: kanate@uniwave.net

UNITED KINGDOM

CYCLESPORT NORTH LTD
Unit 363 LEACH PLACE
WALTON SUMMIT CENTRE
BAMBER BRIDGE - PRESTON
LANCASHIRE
Tel. +44 (0) 1772 339220
Fax: +44 (0) 1772 339290
E-mail: sales@cyclesportnorth.co.uk
Web: www.csnb2b.co.uk

I-RIDE.CO.UK

13 Apex Park - Diplocks Way
BN27 3JU EAST SUSSEX UNITED
KINGDOM
Tel. +44 (0) 1323 445155
Fax: +44 (0) 1323 845849
E-mail: campagnoloservice@jimwalker.co.uk

CHICKEN CYCLEKIT

Unit b2, Cherrycourt Way
LU7 4UH BEDFORDSHIRE UNITED
KINGDOM
Tel. +44 (0) 1525 381347
Fax: +44 (0) 1525 385361
E-mail: sales@chickencyclekit.co.uk

MIKE DIXON IMPORT LTD

UNIT 4 WELLINGTON POINT
AMY JOHNSON WAY
BLACKPOOL BUSINESS PARK
BLACKPOOL - GB
Tel. +44 (0) 1438 798772
E-mail: mdi.ltd@btconnect.com

J.D.WHISKER LTD

16-24 BROWNFIELDS
WELWYN GARDEN CITY
HERTFORDSHIRE
ENGLAND
Tel. +44 (0) 1438 798772

U.S.A.

ACCCELL NORTH AMERICA
7620 S. 192nd Street
KENT, WA 98032
Tel. 1-800-283-2453
Fax: 1-800-955-2453

EURO ASIA IMPORTS

3935 Foothill Blvd
COLMAX INTERNATIONAL, CA 91214 USA
Tel. 818-248-1814
Fax: 818-248-1243

BTI - BICYCLE TECHNOLOGIES

INTERN.
33 VELOCITY WAY
SANTA FE - NEW MEXICO

QBP

6400 W. 105th Street
BLOOMINGTON, MINNESOTA 55438
Tel. 952.941.9391
Fax: 952.941.979999391 / 952.941.97 /
952.941.9799

OCHSNER INTERNATIONAL

246 E Marquardt Drive
WHEELING, IL 60090
Tel. (847) 465-8200
Fax: (847) 465-8282

J&B IMPORTS

J&B Imports, Inc.
11925 Sw 128th St.
MIAMI, FL 33186
Tel. (305) 238-1866
Fax: 305 235 8056

GITA SPORTING GOODS

12600 STEELE CREEK ROAD
CHARLOTTE, N.C. 28273-3730
Tel. (800) 366-4482
Fax: (704) 588-4322

THE HAWLEY COMPANY

1181 South Lake Drive
LEXINGTON, SC 29073-7744
Tel. 803.359.3492 x149
Fax: 800.822.1985

SECURITY BICYCLE

ACCESSORIES, INC.
32 INTERSECTION STREET
HEMPSTEAD, N.Y.11550
Tel. (800) 645-2990
Fax: (516) 485-6117

Campagnolo

PURE PERFORMANCE

CAMPAGNOLO S.R.L.

Via della Chimica, 4
36100 Vicenza - ITALY
Phone: +39 0444 225500
Fax: +39 0444 225400

www.campagnolo.com

Campagnolo®, Campy™, Super Record™, Record™, Chorus™, Athena™, EPS™, CT™, Centaur™, Veloce™, Mirage™, Xenon™, ESP™, ESP™ ACTUATION SYSTEM™, Ultra-Shift™, Vari-Cushion™, No-Bulge™, OS-Fit™, Ultra-Link™, CULT™, USB™, XPS™, MPS™, Power Torque System™, Power-Shift™, Embrace Technology™, S2 System™, CSD™, BE 11™, Revolution 11™, Campy Tech Lab™, 2-Way Fit™, Ultra-Fit™ Tubeless, 3Diamant™, Hyperon™, Neutron™, Proton™, Eurus™, Zonda™, Scirocco™, Vento™, Vento Asymmetric™, Bora™, Ghibli™, Pista™, Khamsin™, Khamsin Asymmetric™, Shamal™, Bullet™, Time Trial™, Ergobrain™, Symmetric Action™, Z-shape™, M-brace™, Even-O™, Superlative™, Floating-Link-Action™, HD-Link™, HD-L™, Exa-Drive™, Ultra-Drive™, Pro-Fit™, Pro-Fit PLUS™, Differential brakes™, Threadless™, Hiddenset™, Hiddenset TTC™, TTC™, Ergopower™, BB System™, C10™, C9™, ED™, UD™, Ultra Narrow™, Over-Torque™, UT™, Ultra-Torque™, Over-Torque™ Technology, Ultra-Hollow™, Skeleton™, Quick Shift™, QS™, Escape™, Infinite™, Champ Triple™, Race Triple™, Comp Triple™, HPW™, Mega-G3™, G3™, Grouped Spokes™, DPRO™, Dual Profile™, Ultralinear-Geometry™, Ultralinear™, Differential rims™, Differential spokes™, Ultra™, Ultra Aero™, DRSC™, RDB™, Spokes Anti-Rotation System™, Spoke Dynamic Balance™, Comp Ultra™, Comp One™, 3Diamant™, Dynamic Balance™, Full Carbon™, Multidirectional™, Unidirectional™, AC-H™, AC-S™, SC-S™, Big™, Miro™, Pro-Shop™, Tecnologia ed Emozione™ are Campagnolo Srl Trademarks.

Cronitect® is a registered Trademark of Schaeffler Group

QR Code® is registered trademarks of DENSO WAVE INCORPORATED.

Copyright(C) 2000-2010

DENSO WAVE INCORPORATED

All right reserved

Credits:

Graphic concept

CONDENSED srl - www.condensed.it

Credits:

Racing photos: ©Tim De Waele / www.tdwspport.com

Product photos: Studio Nova

Campagnolo

**WINS
VINCE
GAGNE
GEWINNT**



2013 GIRO D'ITALIA
Vincenzo Nibali



2013 WORLD CHAMPION
Rui Costa



2014 GIRO D'ITALIA
Nairo Quintana



2014 TOUR DE FRANCE
Vincenzo Nibali